



Gain

32.0 dB

Index Section

0.000 in

Table

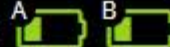
0

ADD Indication

08x188-3_090_butt-up.odat

45°C

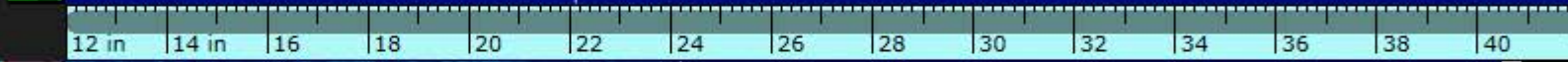
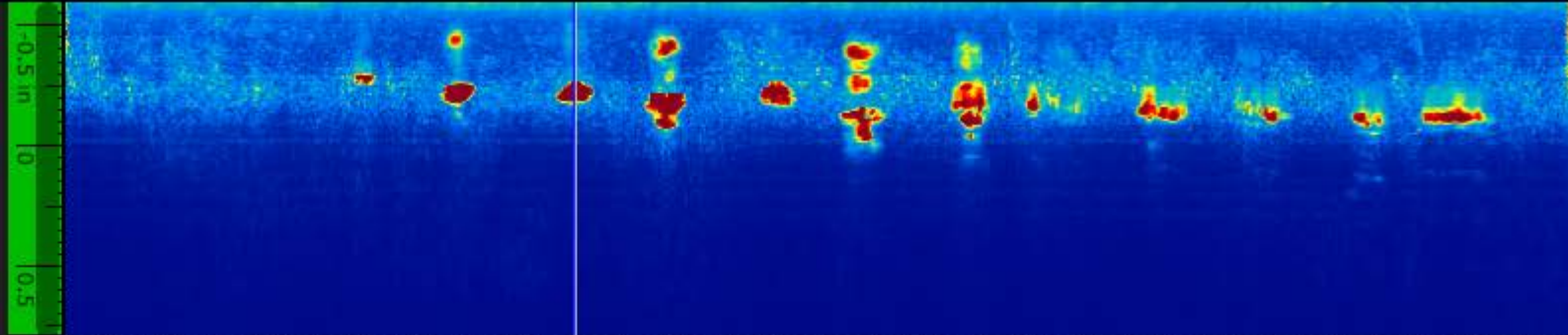
37%



MXU 5.7.0

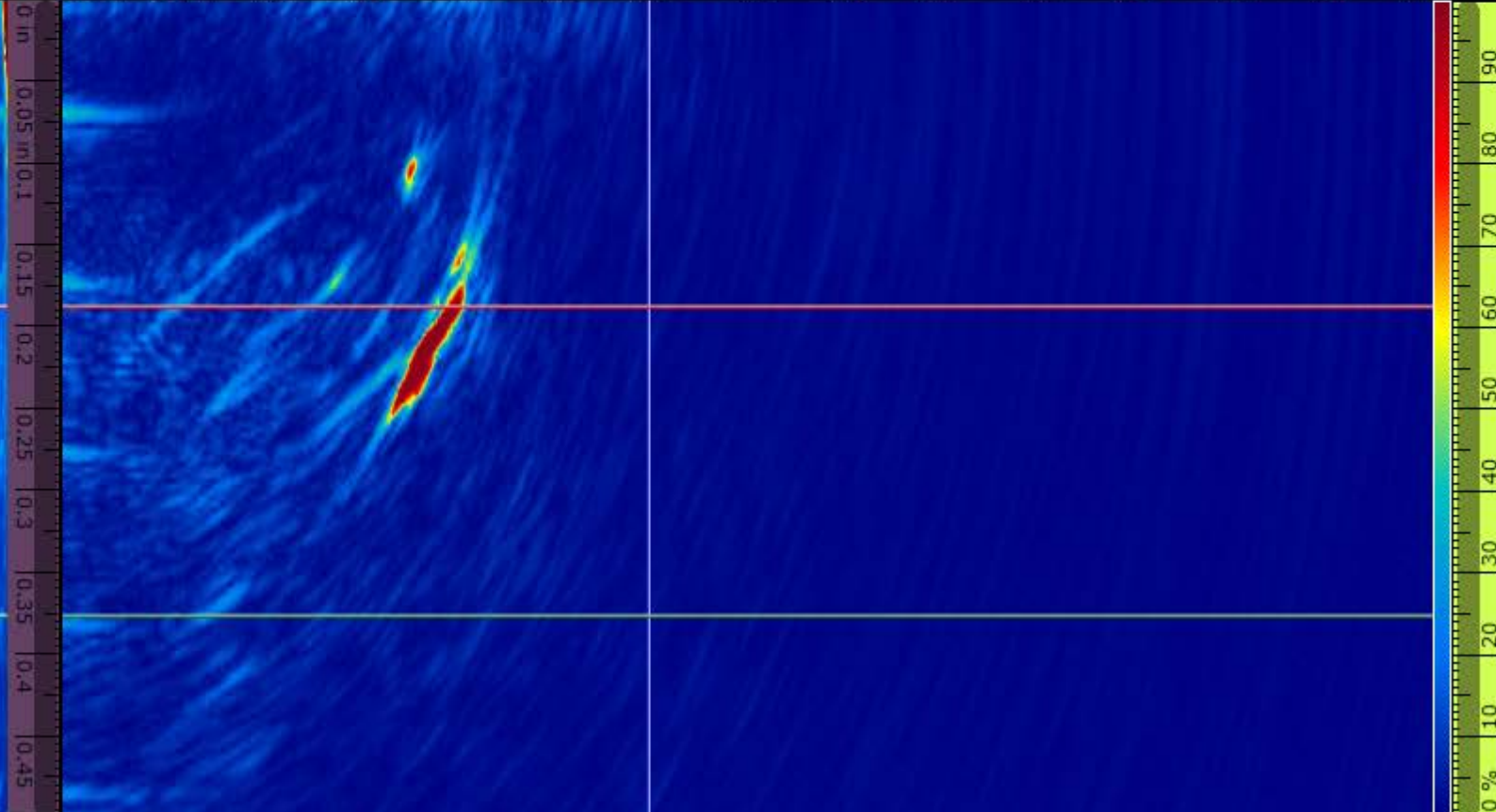
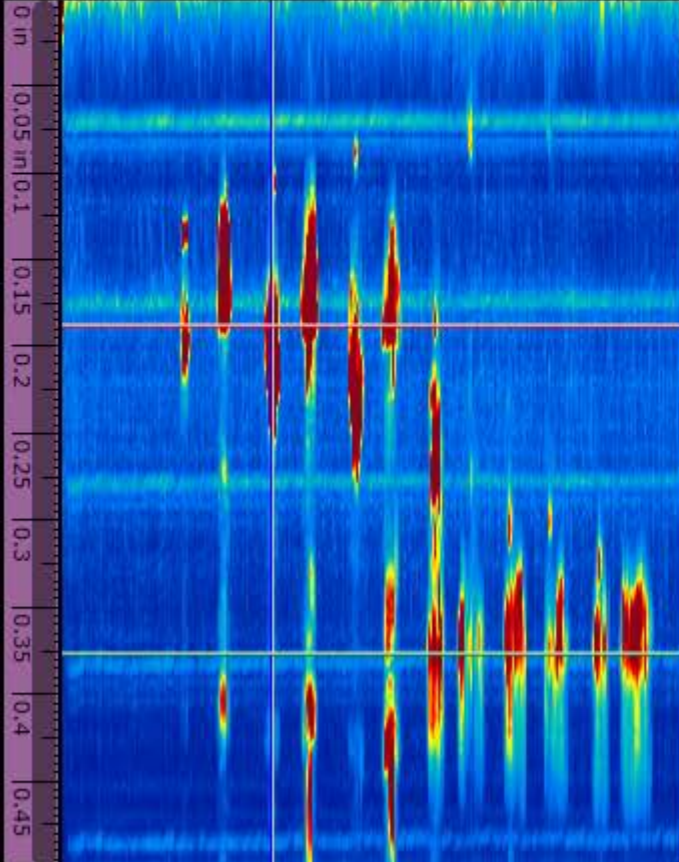
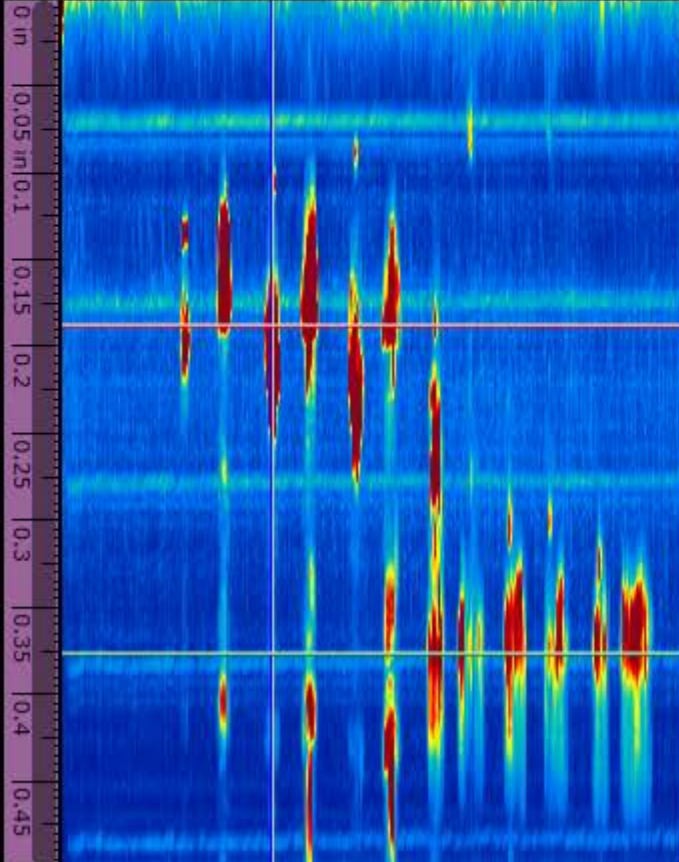


View



Scan
22.074 in

Max%
472.4 %



DMax%
0.224 in

IMax%
-0.235 in

%maxZ
NaN %

D(m)
0.376 in

Next >



Gain

32.0 dB

Index Section

0.000 in

Table

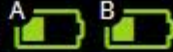
0

ADD Indication

08x188-3_090_set-back.odat

44°C

40 %



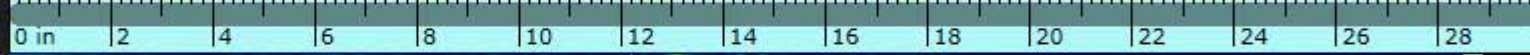
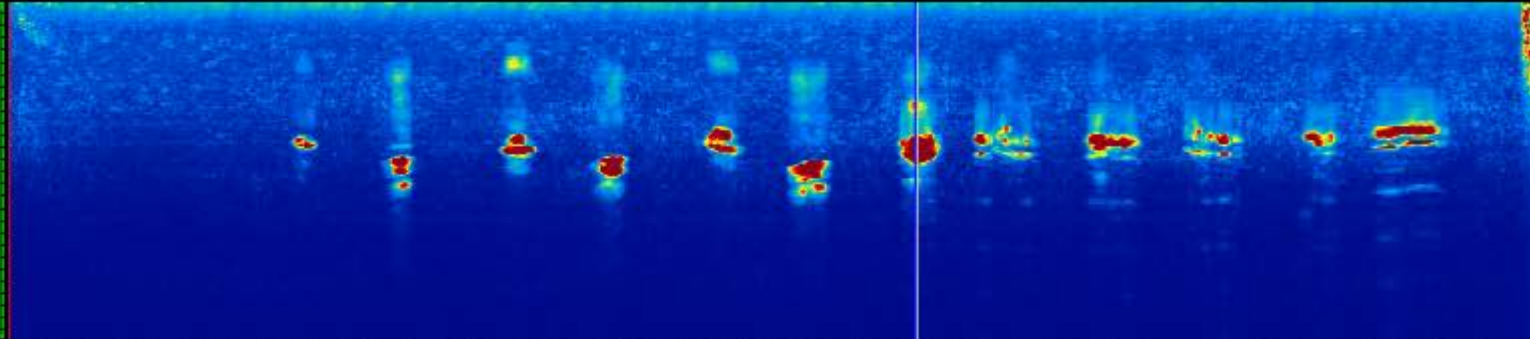
MXU 5.7.0



View

2t

Top-Side-End



Scan 17.745 in

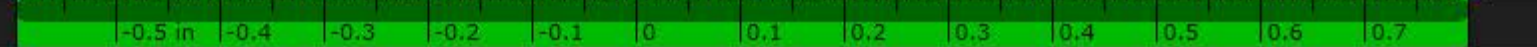
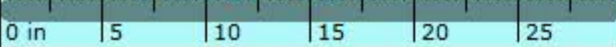
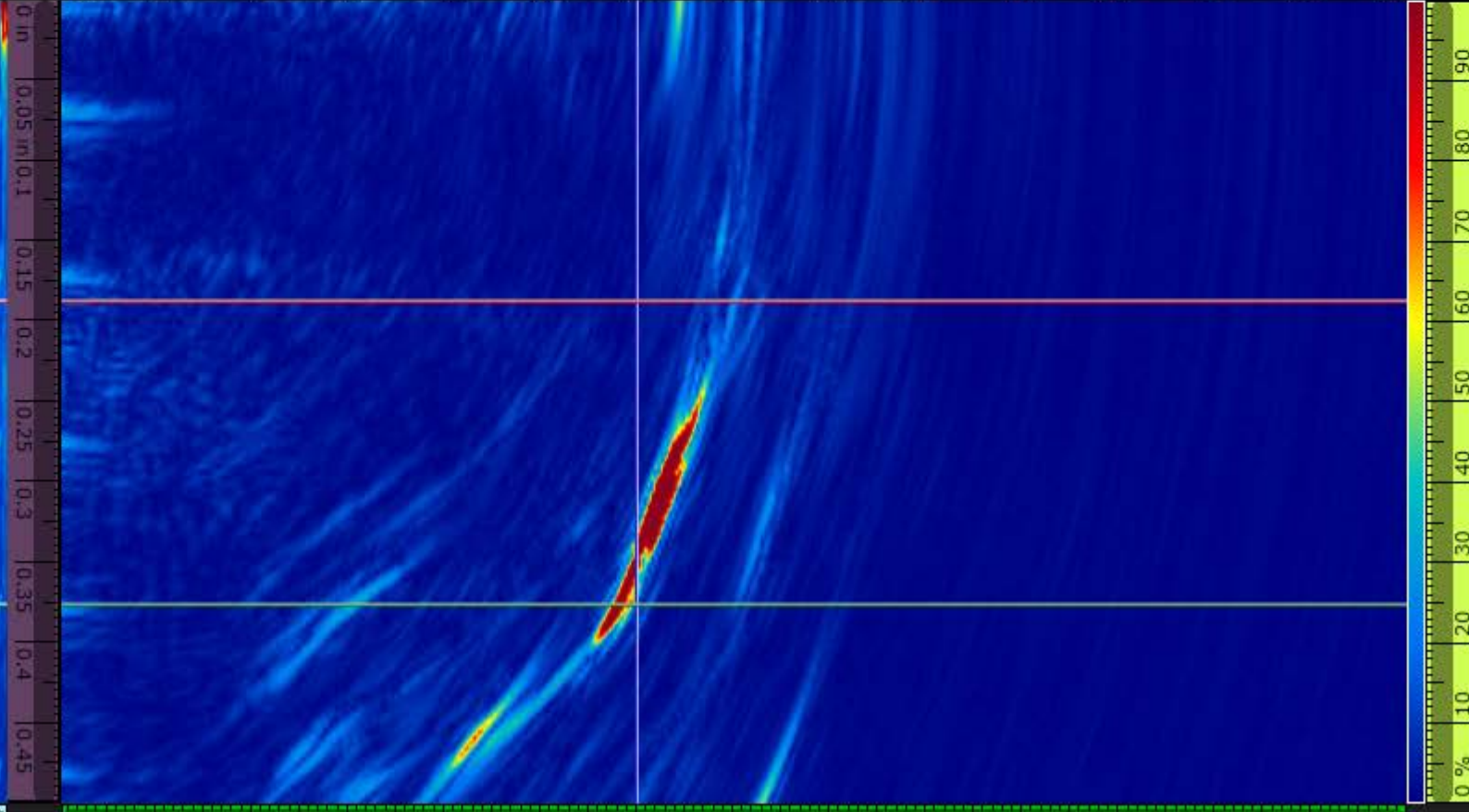
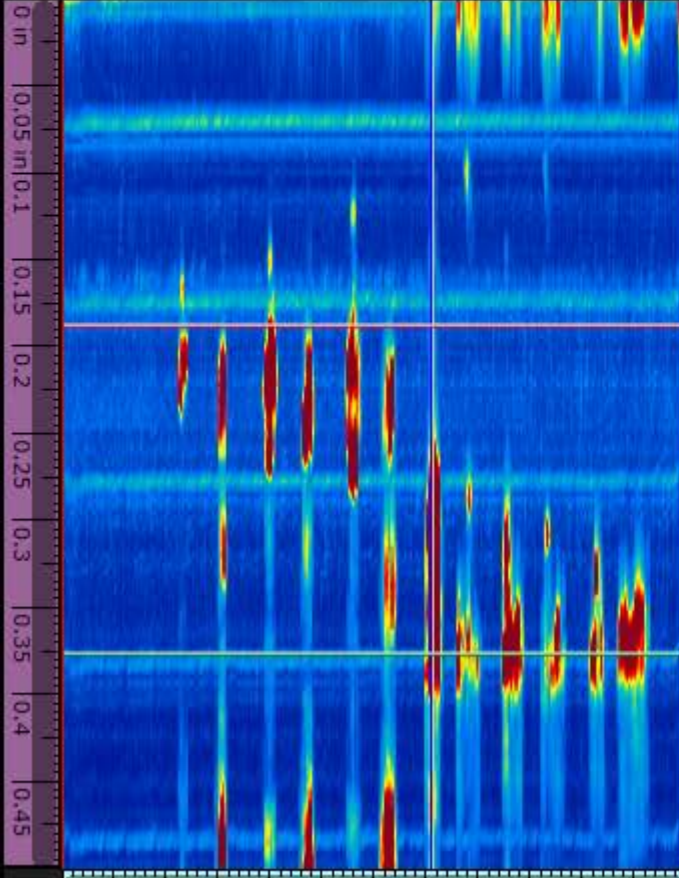
Max% 516.5 %

DMax% 0.308 in

IMax% 0.024 in

%maxZ 28.3 %

D(m) 0.376 in



Next >



Gain
32.0 dB

Index Section
0.000 in

Table 0
ADD Indication

08x188-3_270_butt-up.odat

46°C 35 % A B

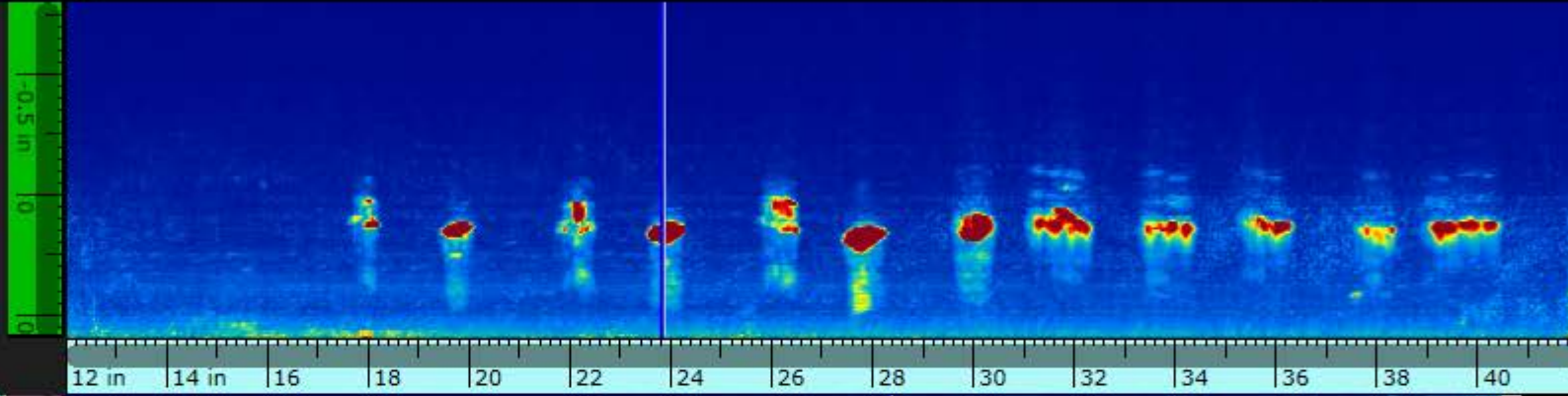
MXU 5.7.0



View

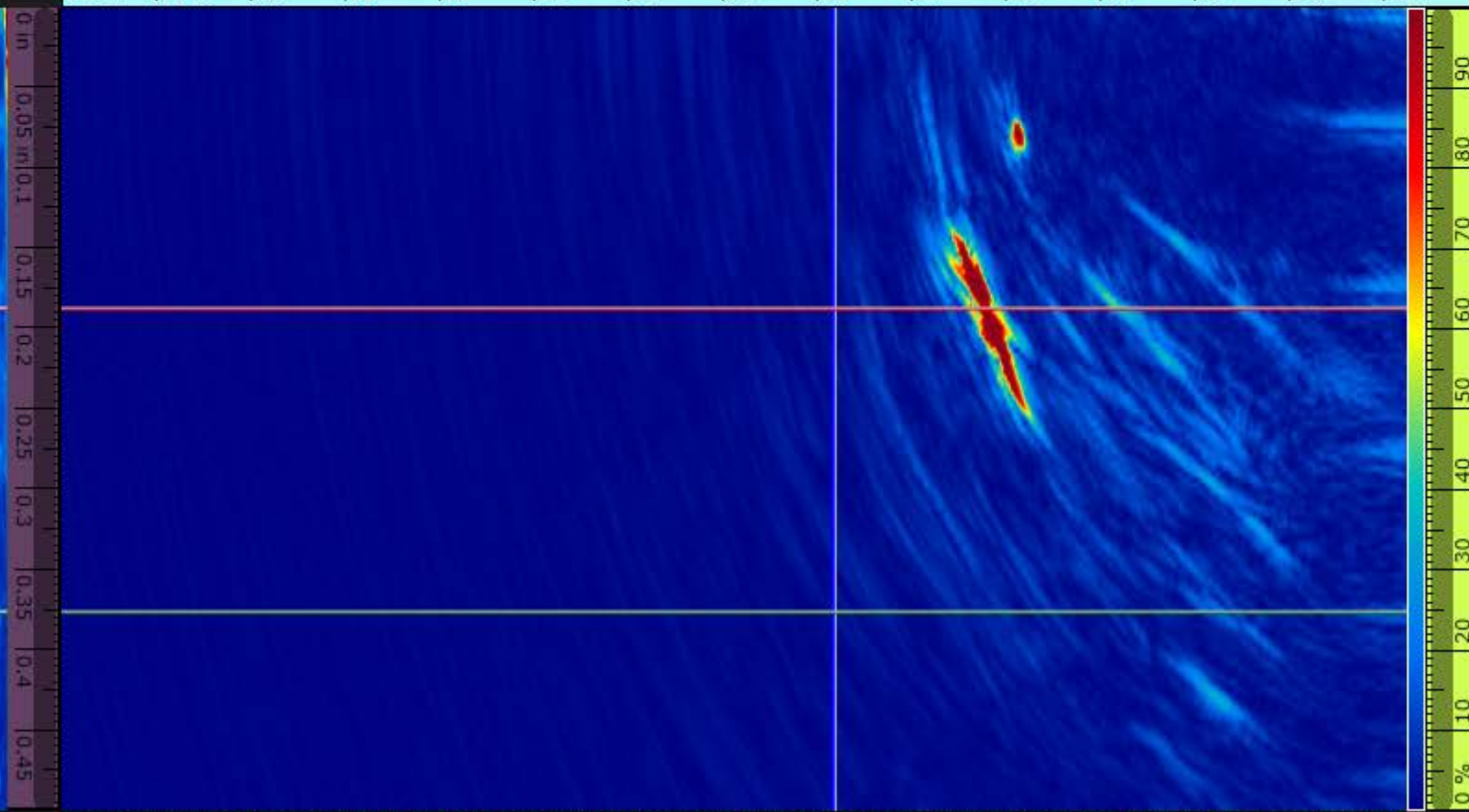
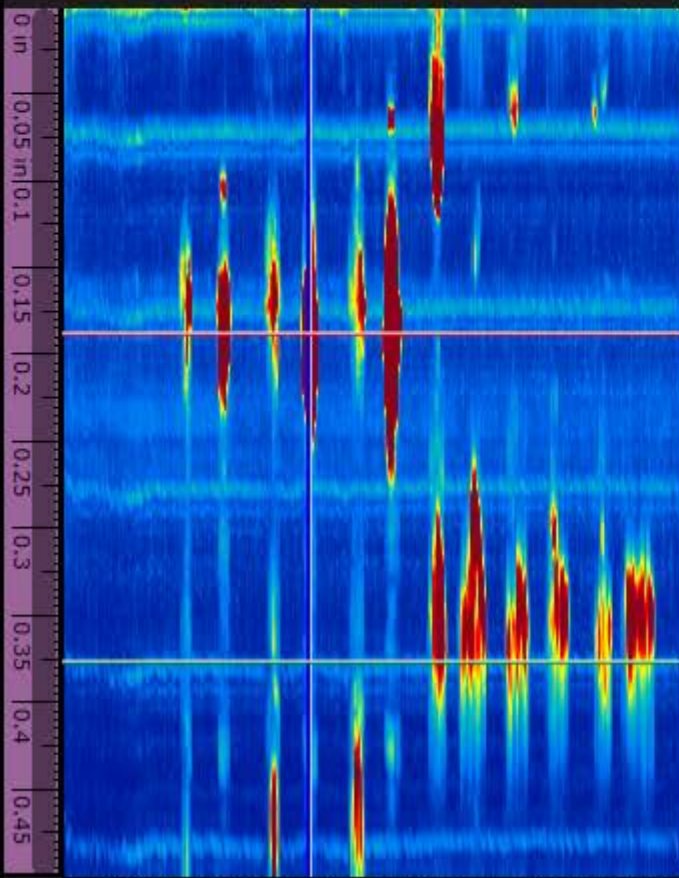
2t

Top-Side-End



Scan
23.829 in

Max%
314.8 %



DMax%
0.175 in

IMax%
0.154 in

%maxZ
NaN %

D(m)
0.376 in

Next >



Gain

32.0 dB

Index Section

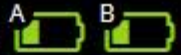
0.000 in

Table

0

46°C

35 %



MXU 5.7.0



View

ADD Indication

08x188-3_270_set-back.odat

2t

Top-Side-End

Scan

26.130 in

Max%

61.1 %

DMax%

0.500 in

IMax%

-0.144 in

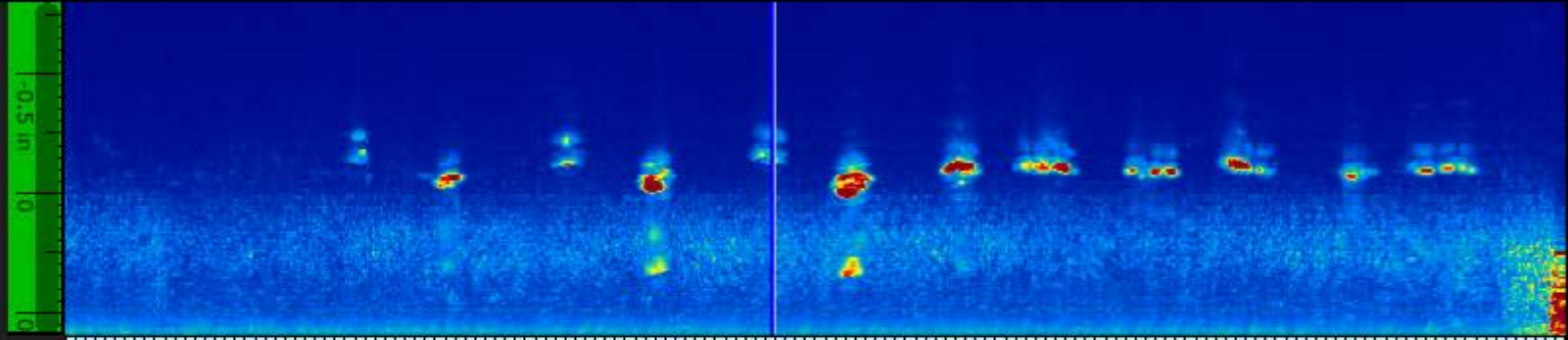
%maxZ

NaN %

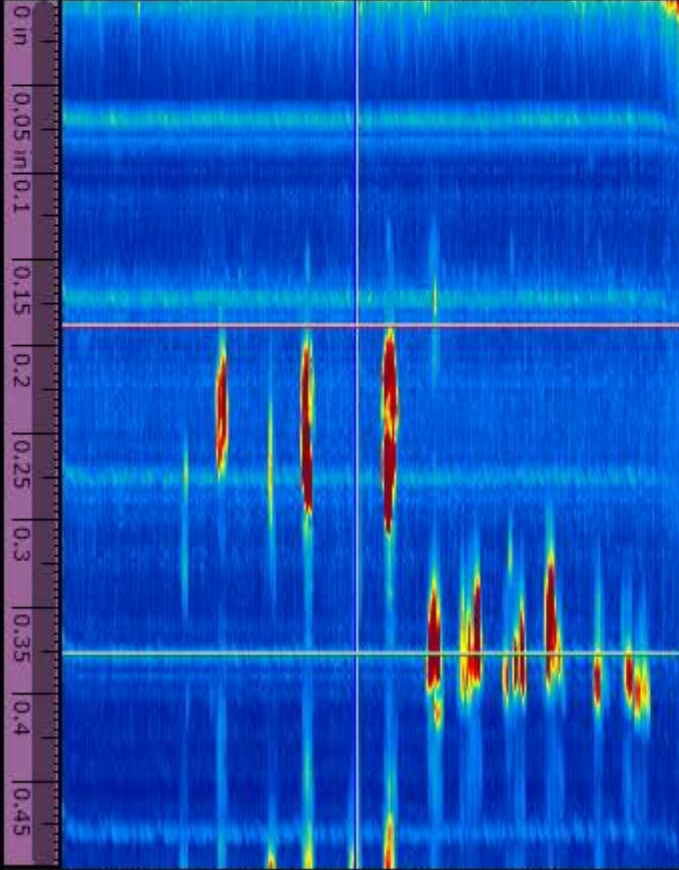
D(m)

0.376 in

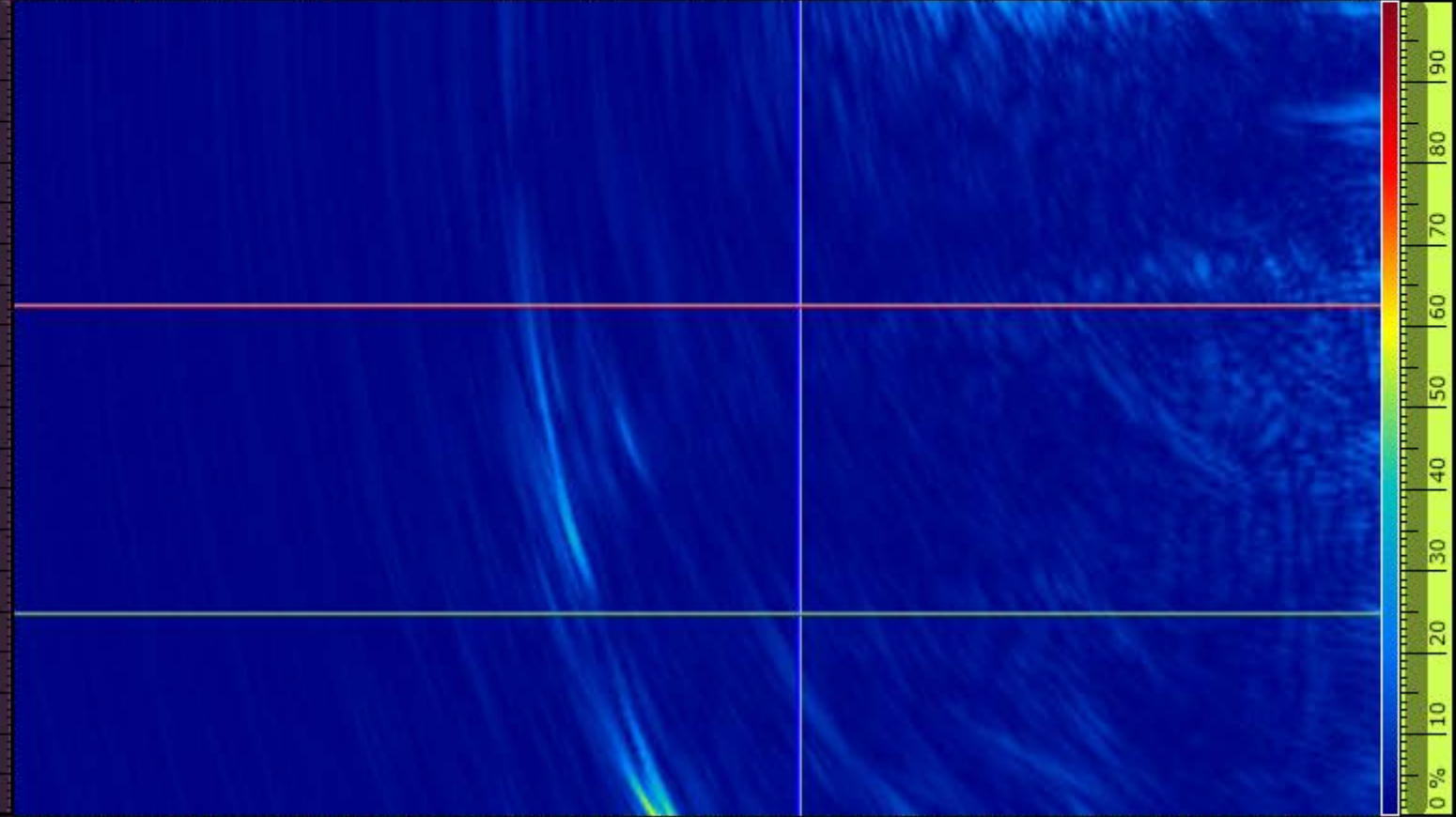
Next >



12 in 14 in 16 in 18 in 20 in 22 in 24 in 26 in 28 in 30 in 32 in 34 in 36 in 38 in 40 in



15 in 20 in 25 in 30 in 35 in 40 in



-0.8 in -0.7 -0.6 -0.5 -0.4 -0.3 -0.2 -0.1 0 0.1 0.2 0.3 0.4 0.5





Gain

32.0 dB

Index Section

0.000 in

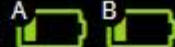
Table

0

HD

48°C

26 %



MXU 5.7.0



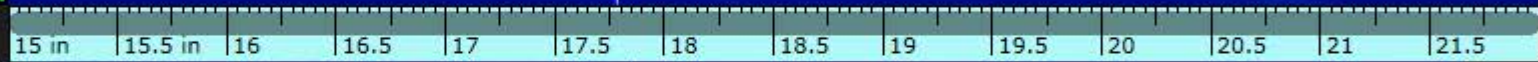
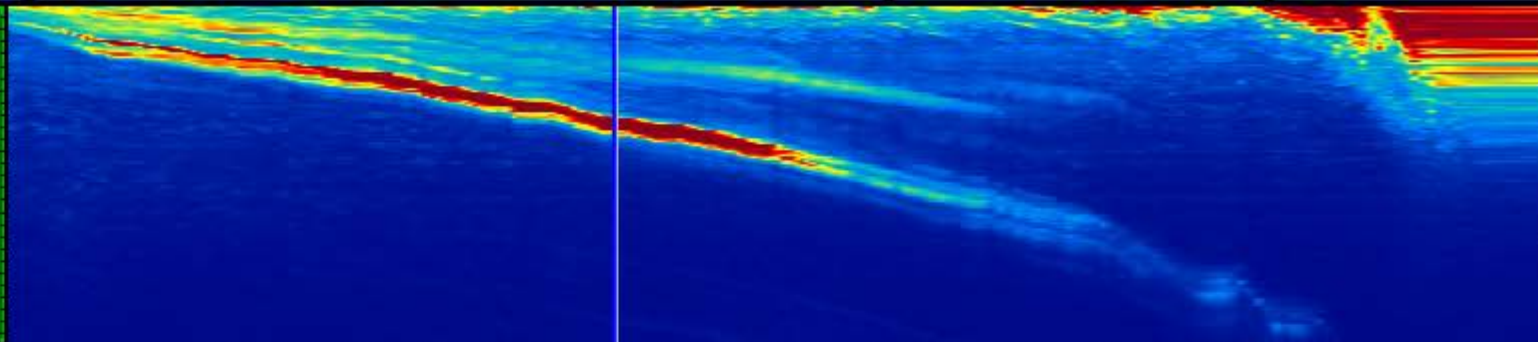
View

ADD Indication

08x188-3_at10.2in_090.odat*

2t

Top-Side-End



Scan 17.769 in

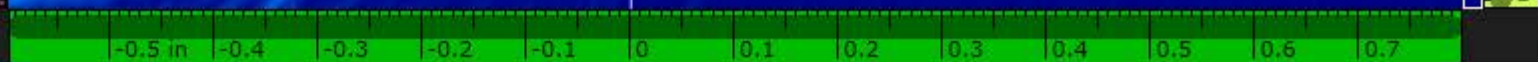
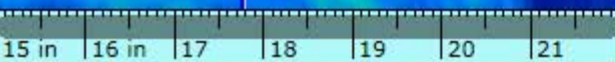
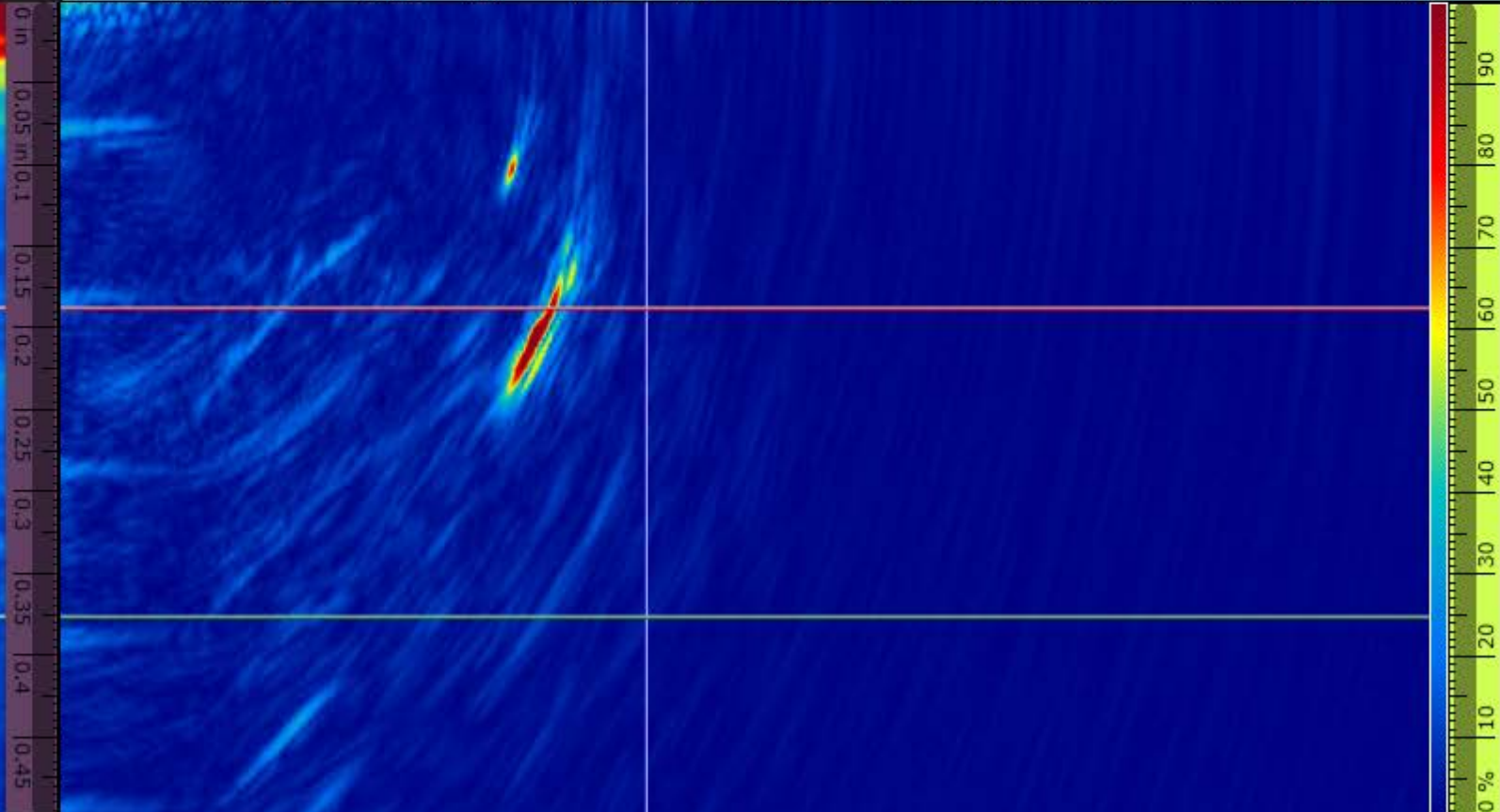
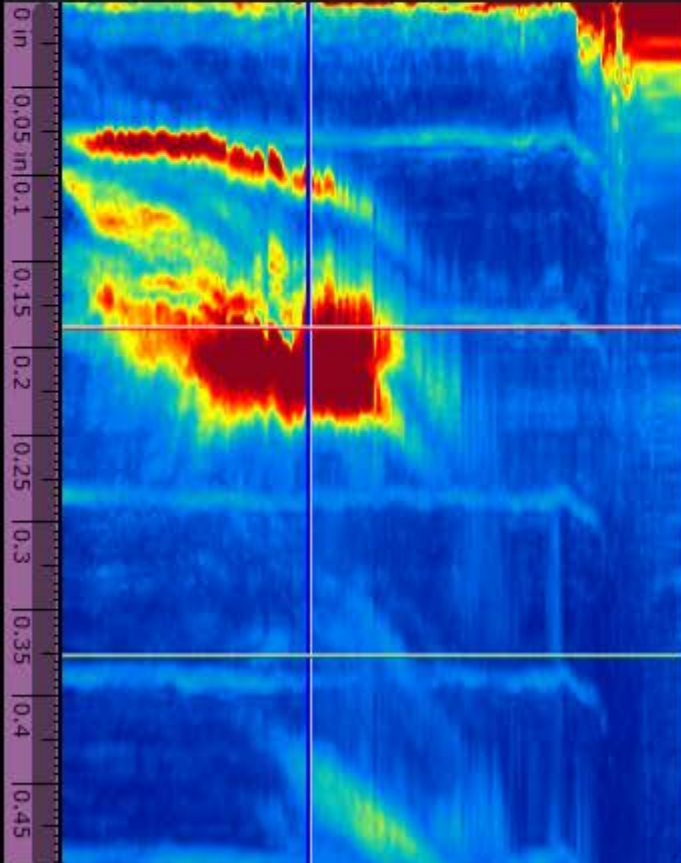
Max% 173.9 %

DMax% 0.214 in

IMax% -0.118 in

%maxZ 88.8 %

D(m) 0.376 in



Next >



Gain
32.0 dB

Index Section
0.000 in

Table 0
ADD Indication

HD

48°C 26 % A B

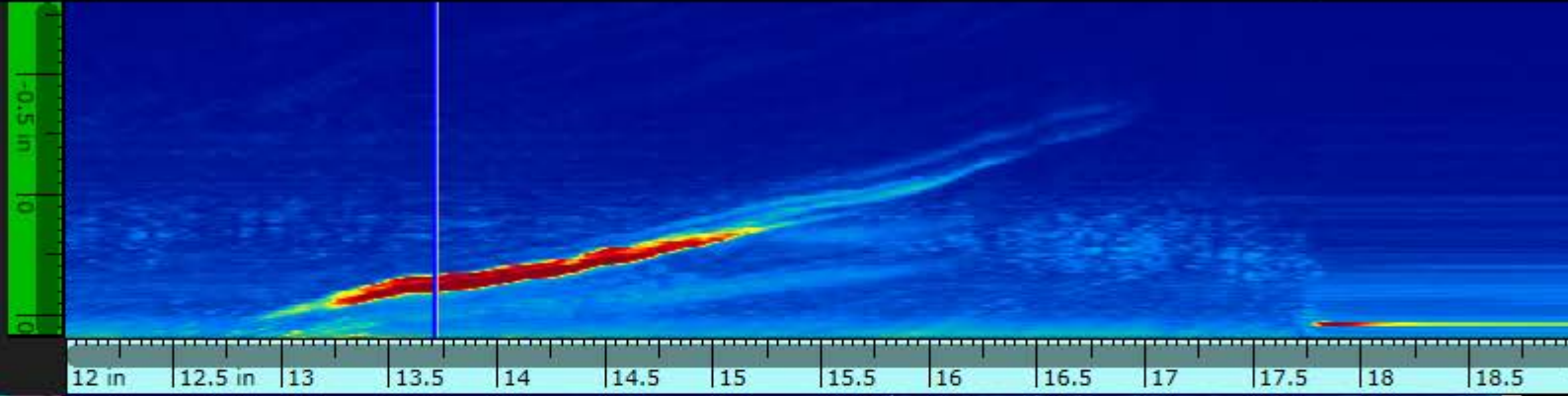
MXU 5.7.0

View

08x188-3_at10.2in_270.odat

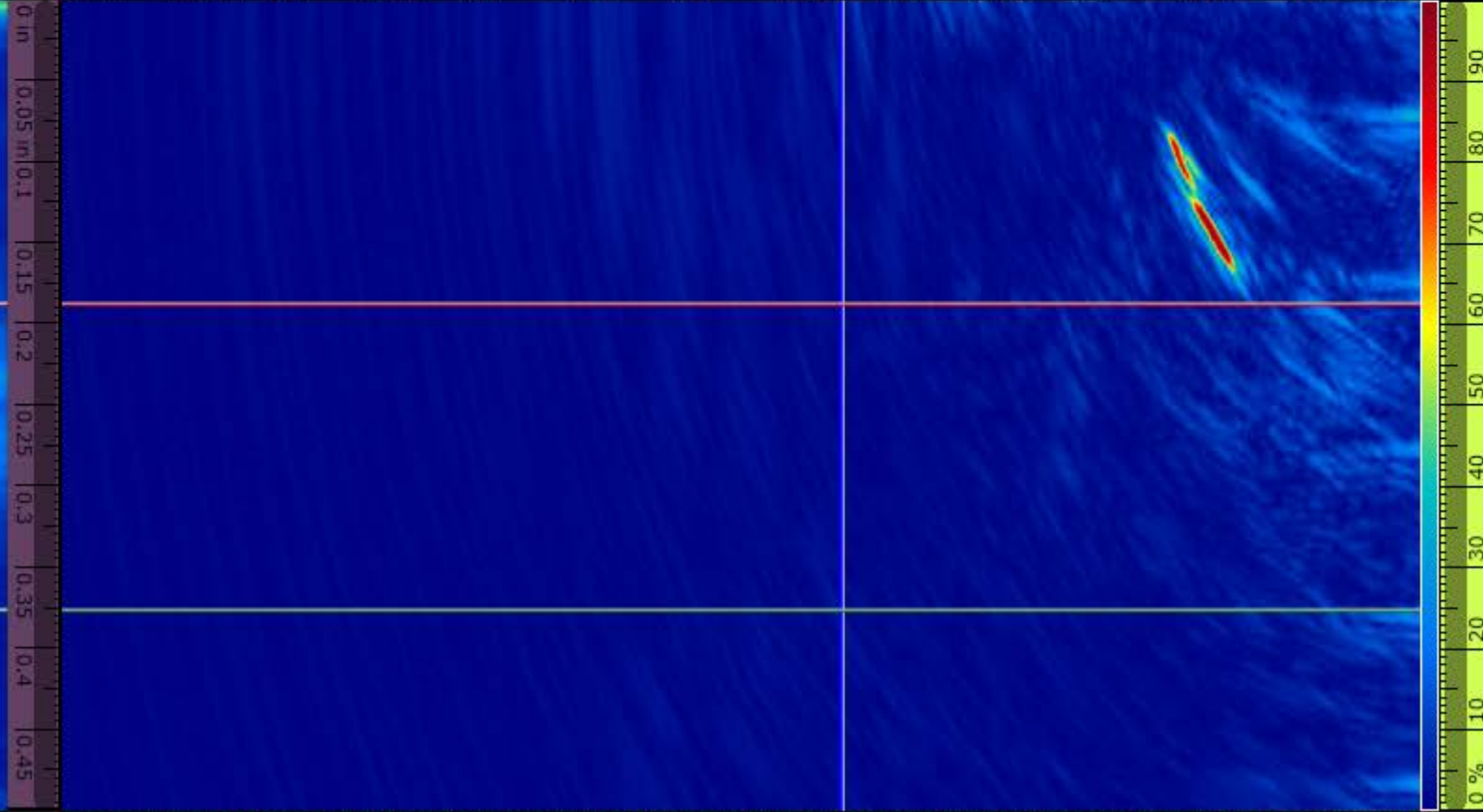
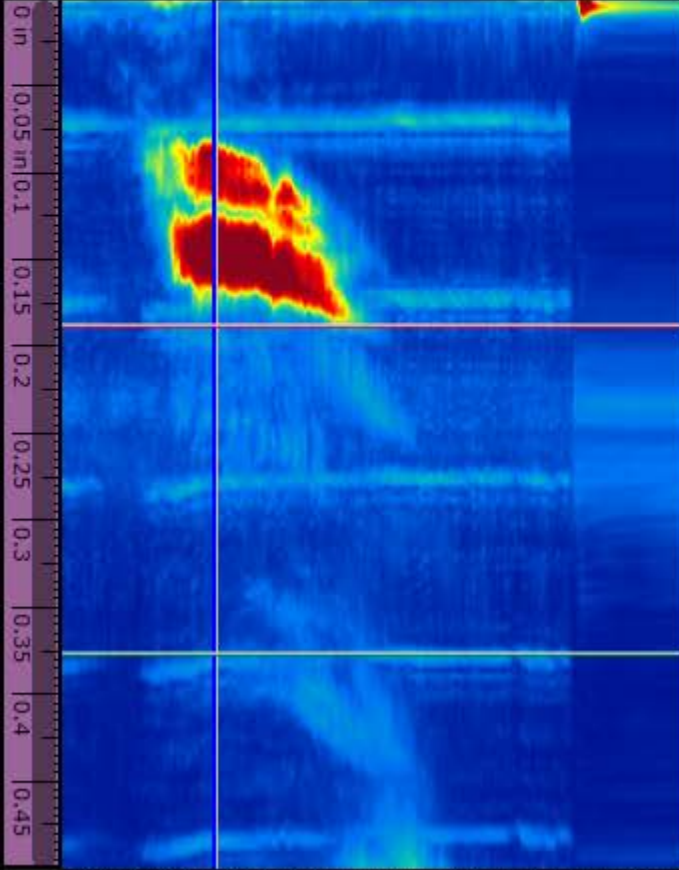
2t

Top-Side-End



Scan
13.713 in

Max%
158.7 %



DMax%
0.147 in

IMax%
0.384 in

%maxZ
NaN %

D(m)
0.376 in

Next >



Gain

32.0 dB

Index Section

0.000 in

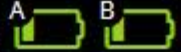
Table

0

HD

48°C

25 %



MXU 5.7.0



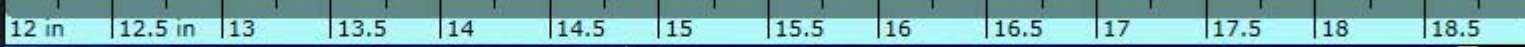
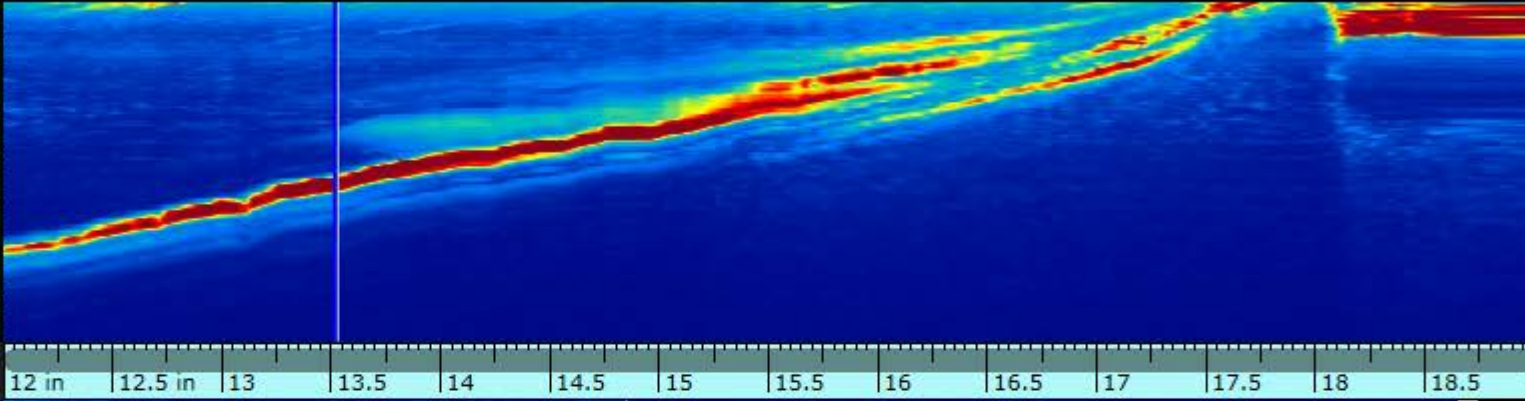
View

ADD Indication

08x188-3_at22.0in_090.odat

2t

Top-Side-End



Scan 13.518 in

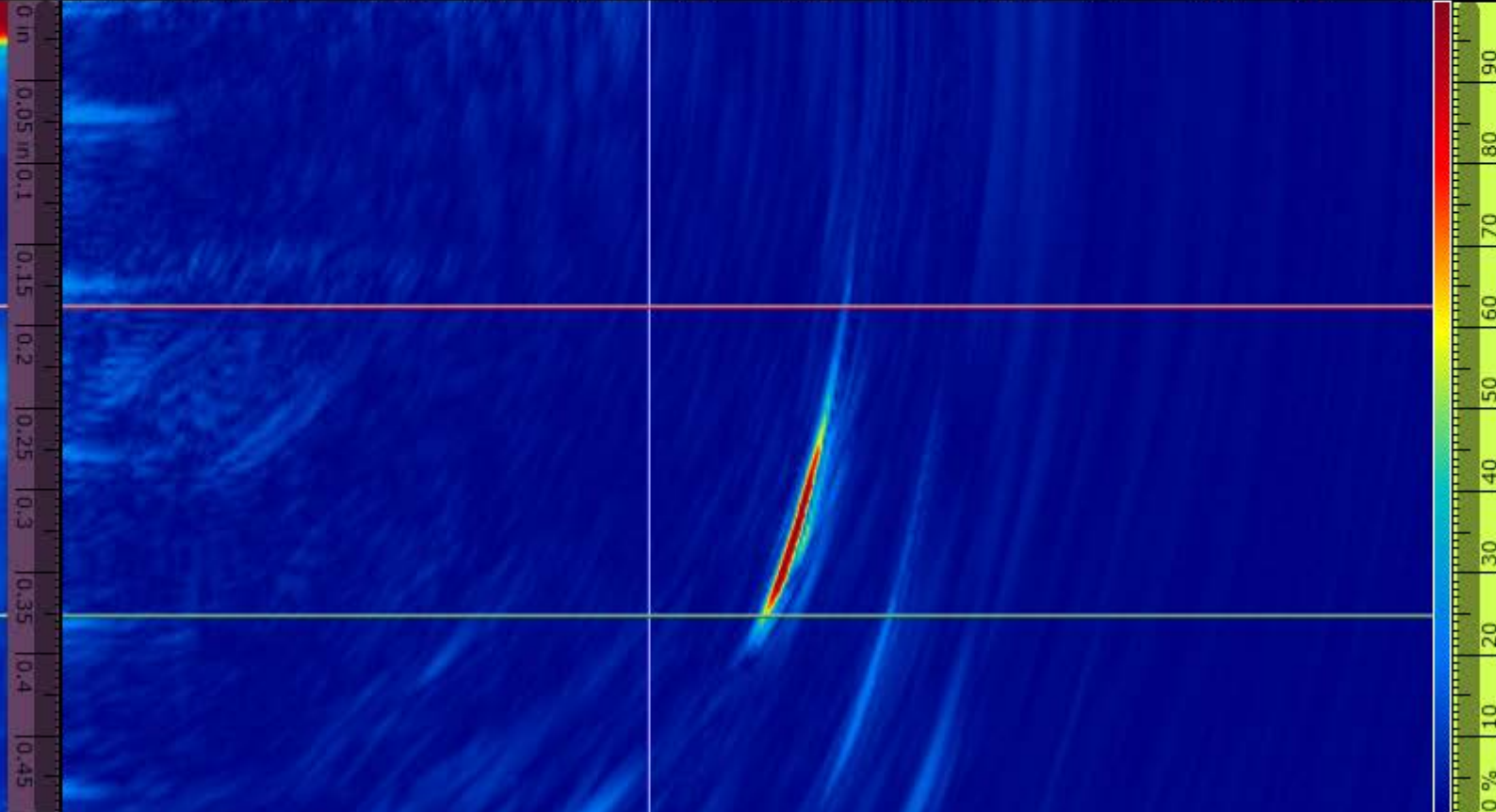
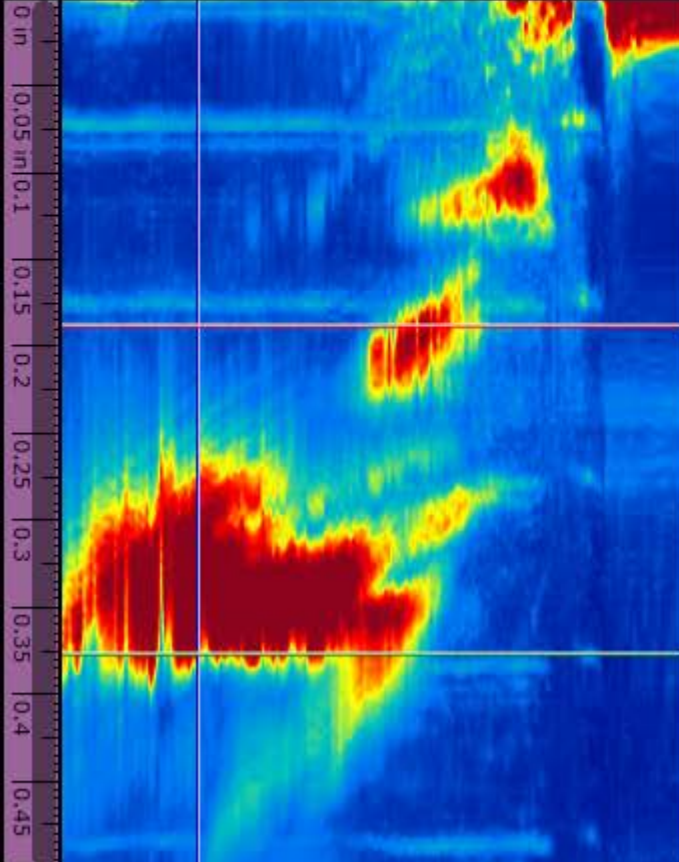
Max% 131.5 %

DMax% 0.325 in

IMax% 0.151 in

%maxZ NaN %

D(m) 0.376 in



Next >



Gain

32.0 dB

Index Section

0.000 in

Table

0

HD

48°C

25 %

A

B

MXU 5.7.0



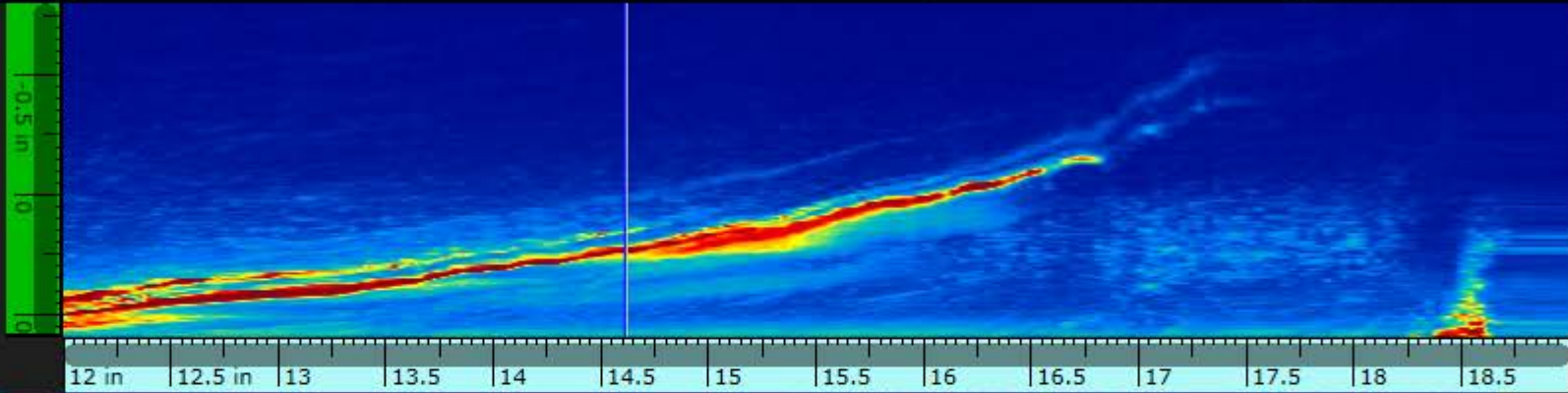
View

ADD Indication

08x188-3_at22.0in_270.odat

2t

Top-Side-End



Scan 14.610 in

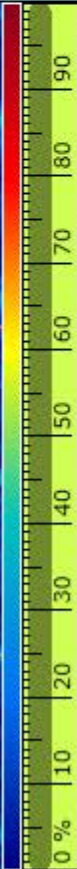
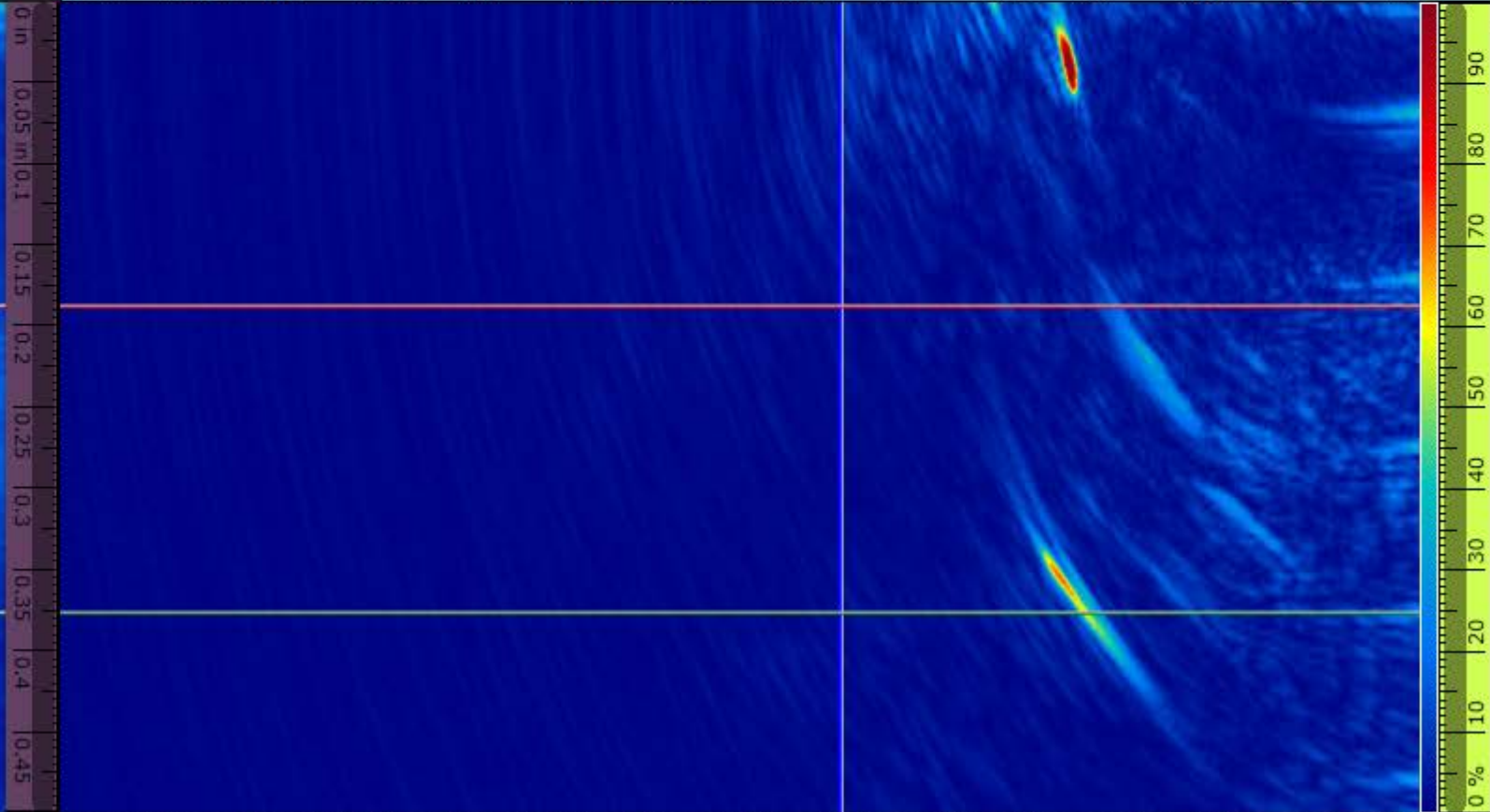
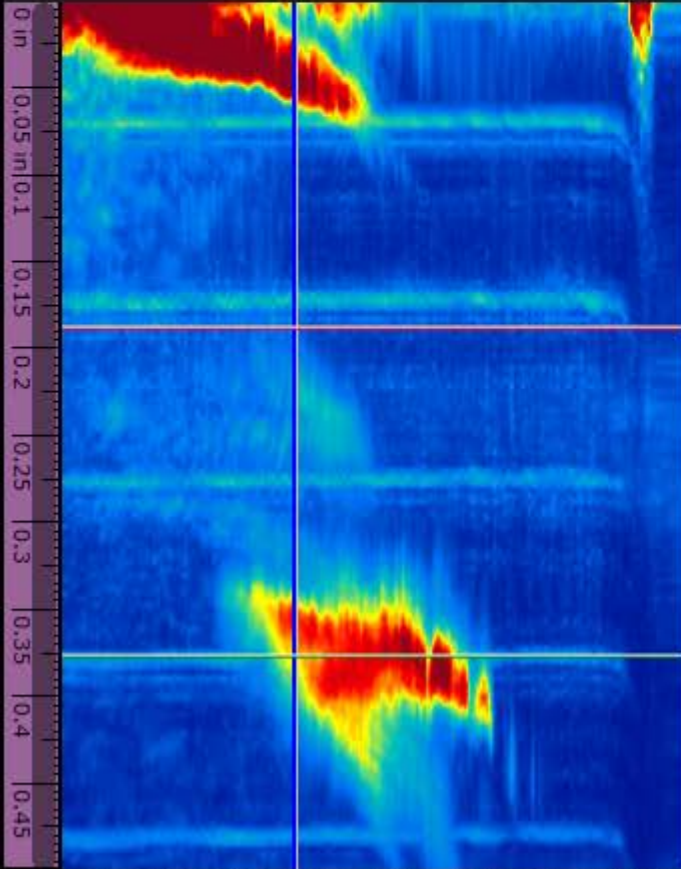
Max% 145.5 %

DMax% 0.039 in

IMax% 0.235 in

%maxZ NaN %

D(m) 0.376 in



Next >



Gain

32.0 dB

Index Section

0.300 in

Table

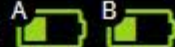
0

ADD Indication

16x375-3_090_butt-up.odat

41°C

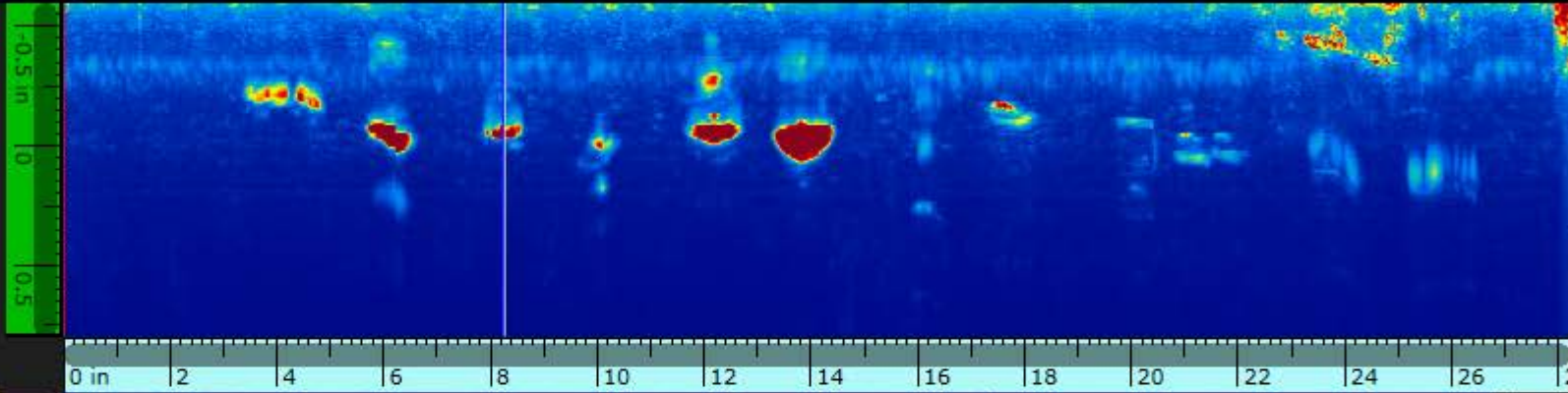
44%



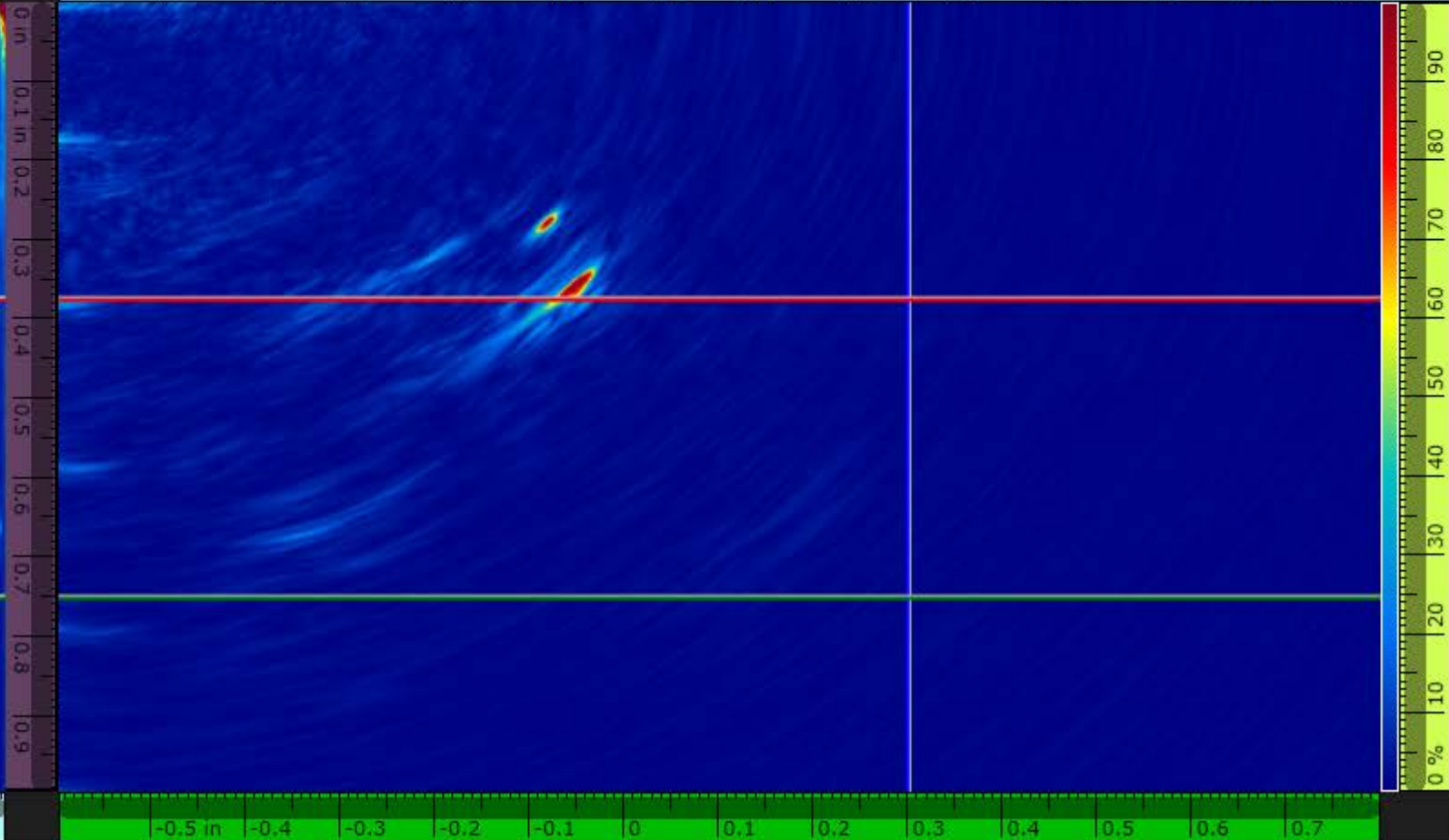
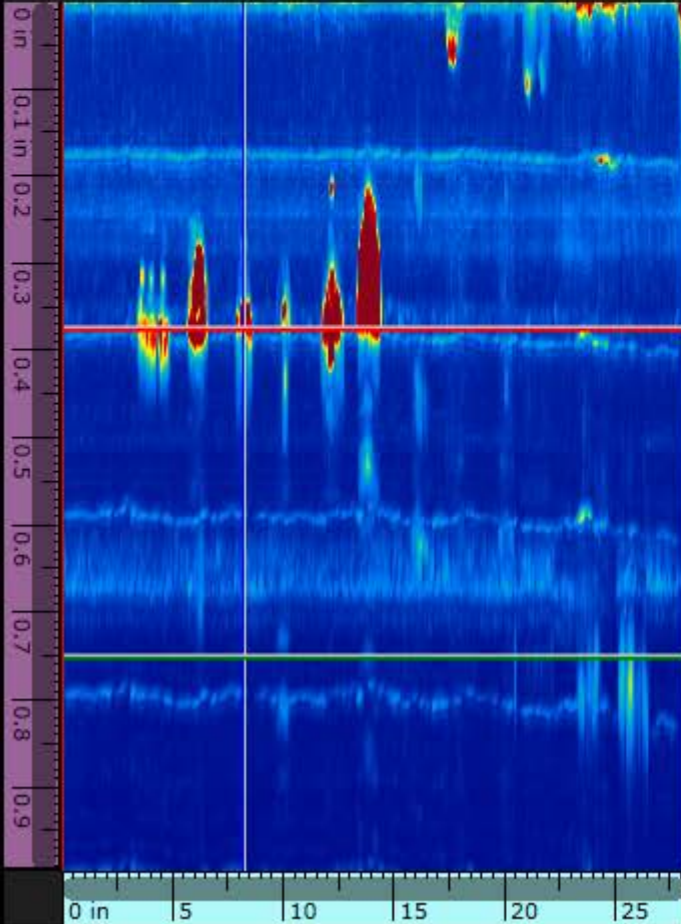
MXU 5.7.0



View



Scan
8.229 in



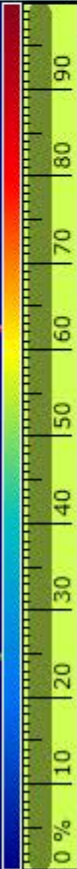
S(m-r)
0.000 in

D(m-r)
0.375 in

I(m-r)
1.635 in

I-D(m-r)
1.677 in

Ampl.Fid.
2.2 dB



< Previous



Gain

32.0 dB

Index Section

0.300 in

Table

0

40°C

45%



MXU 5.7.0



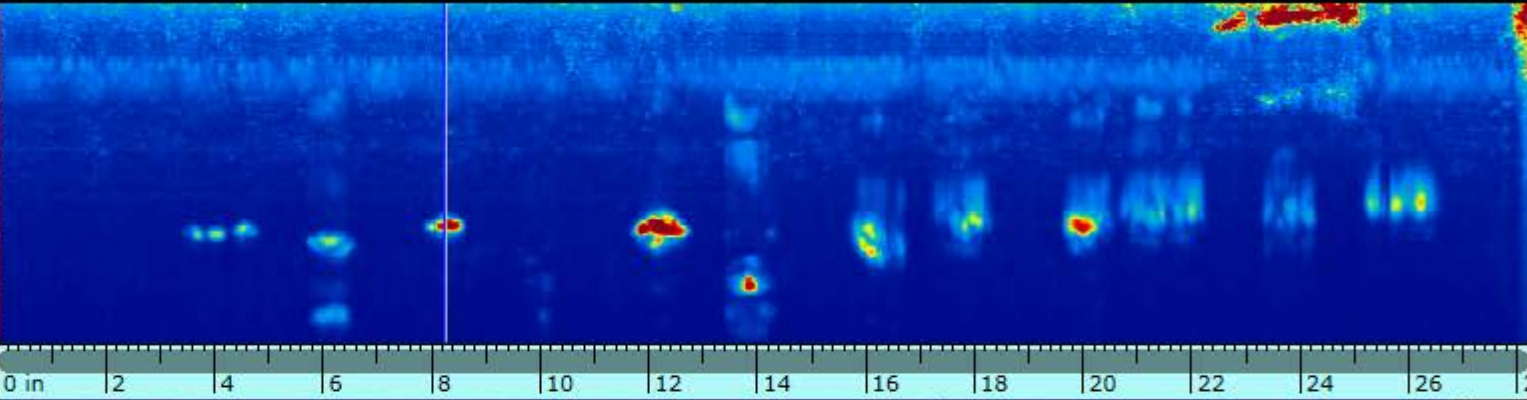
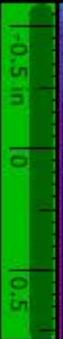
View

ADD Indication

16x375-3_090_set-back.odat*

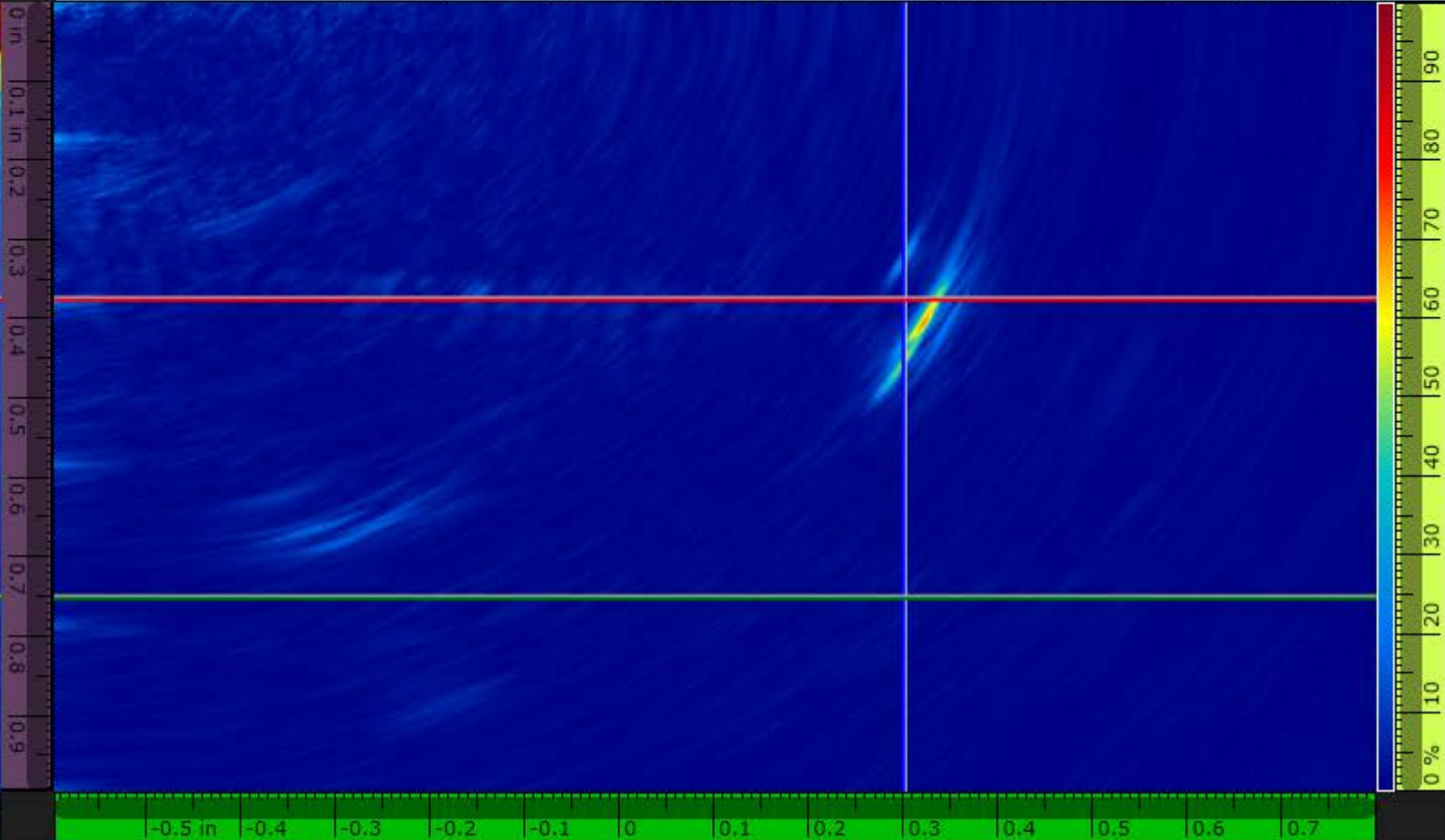
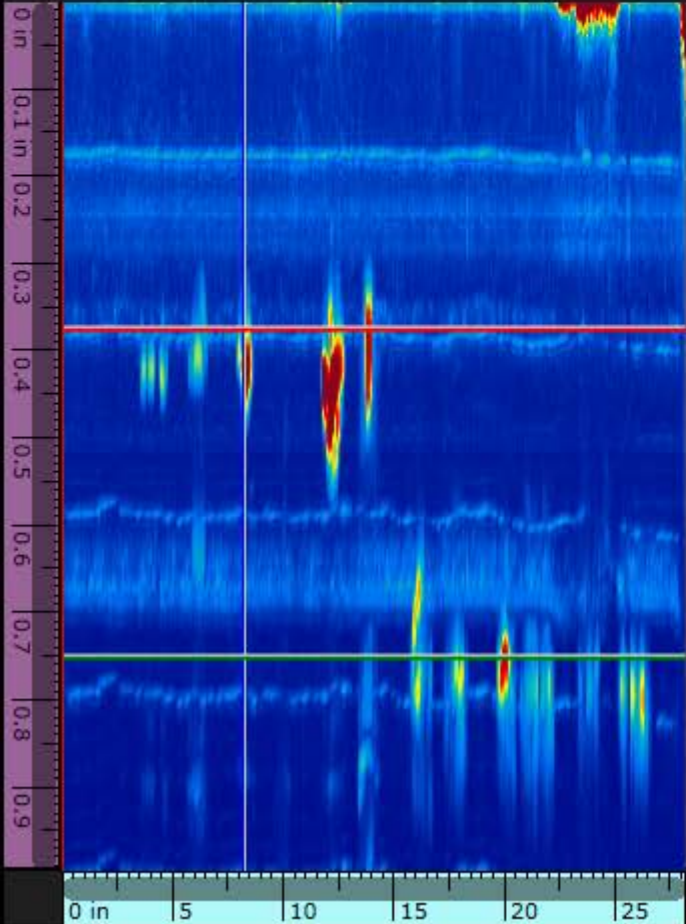
2t

Top-Side-End



Scan 8.229 in

S(m-r) 0.000 in

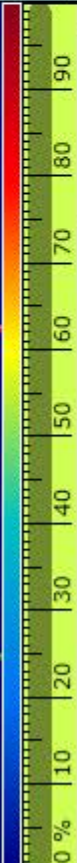


D(m-r) 0.375 in

I(m-r) 1.635 in

I-D(m-r) 1.677 in

Ampl.Fid. 2.2 dB



< Previous



Gain
32.0 dB

Index Section
0.300 in

Table 0
ADD Indication

16x375-3_270_butt-up.odat

43°C 42% A B

MXU 5.7.0

View

2t

Top-Side-End

Scan
18.018 in

S(m-r)
0.000 in

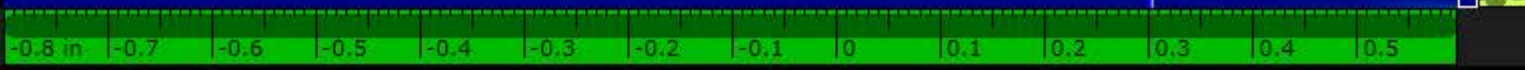
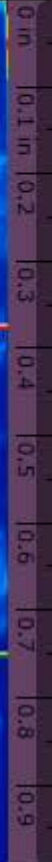
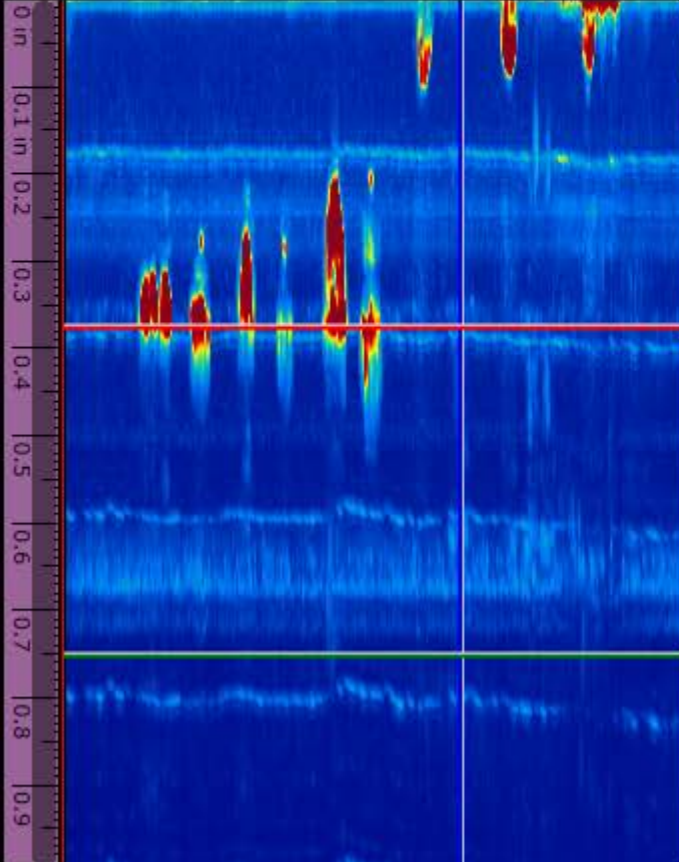
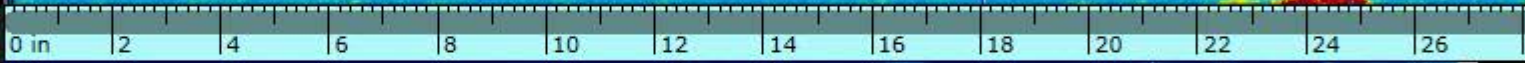
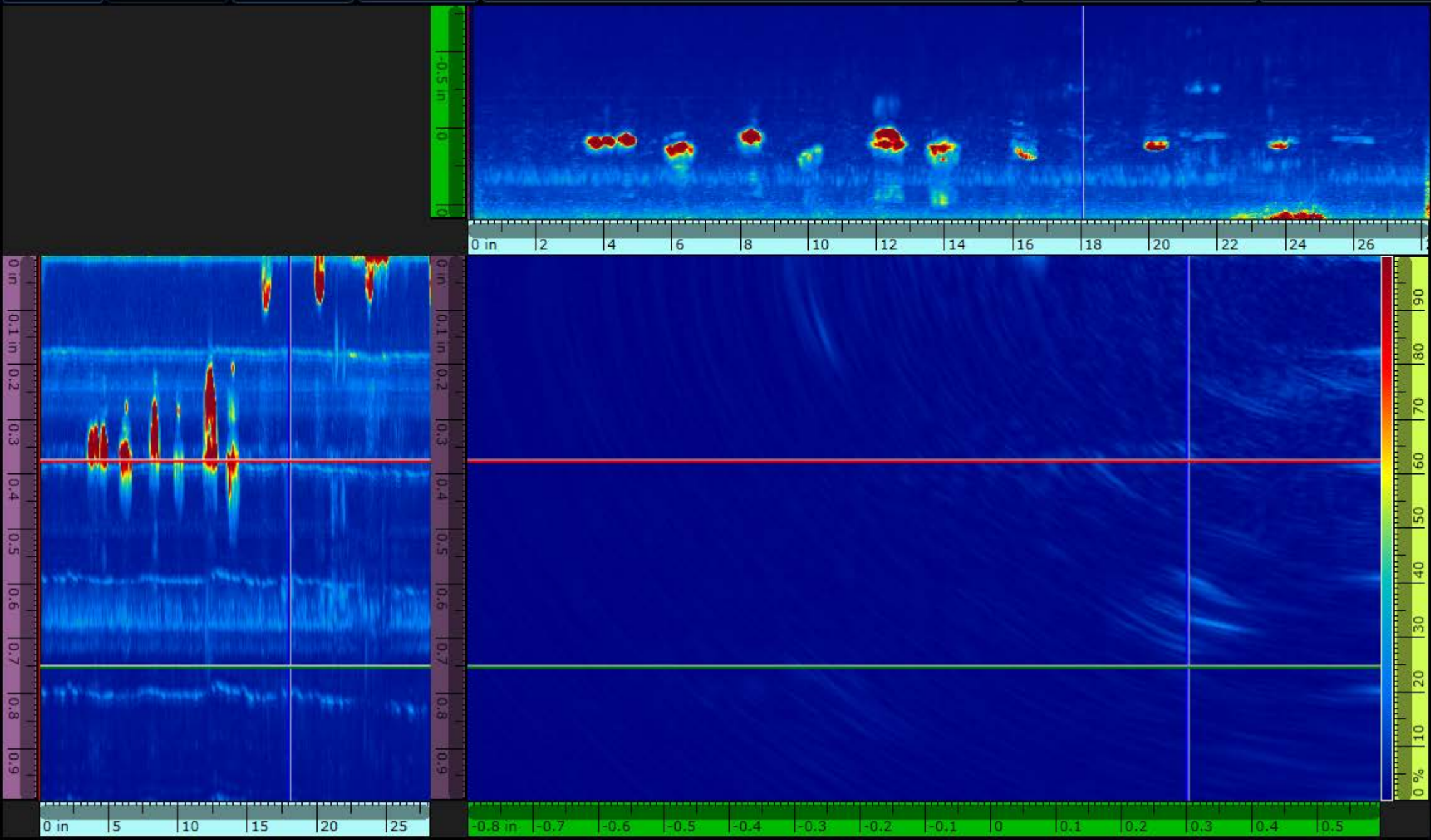
D(m-r)
0.375 in

I(m-r)
1.635 in

I-D(m-r)
1.677 in

Ampl.Fid.
2.2 dB

< Previous





Gain

32.0 dB

Index Section

0.000 in

Table

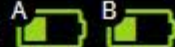
0

ADD Indication

16x375-3_270_set-back.odat

43°C

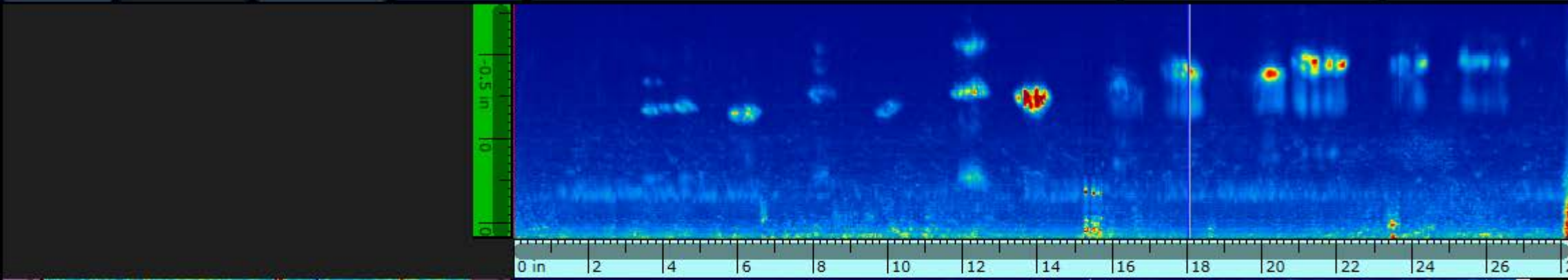
42 %



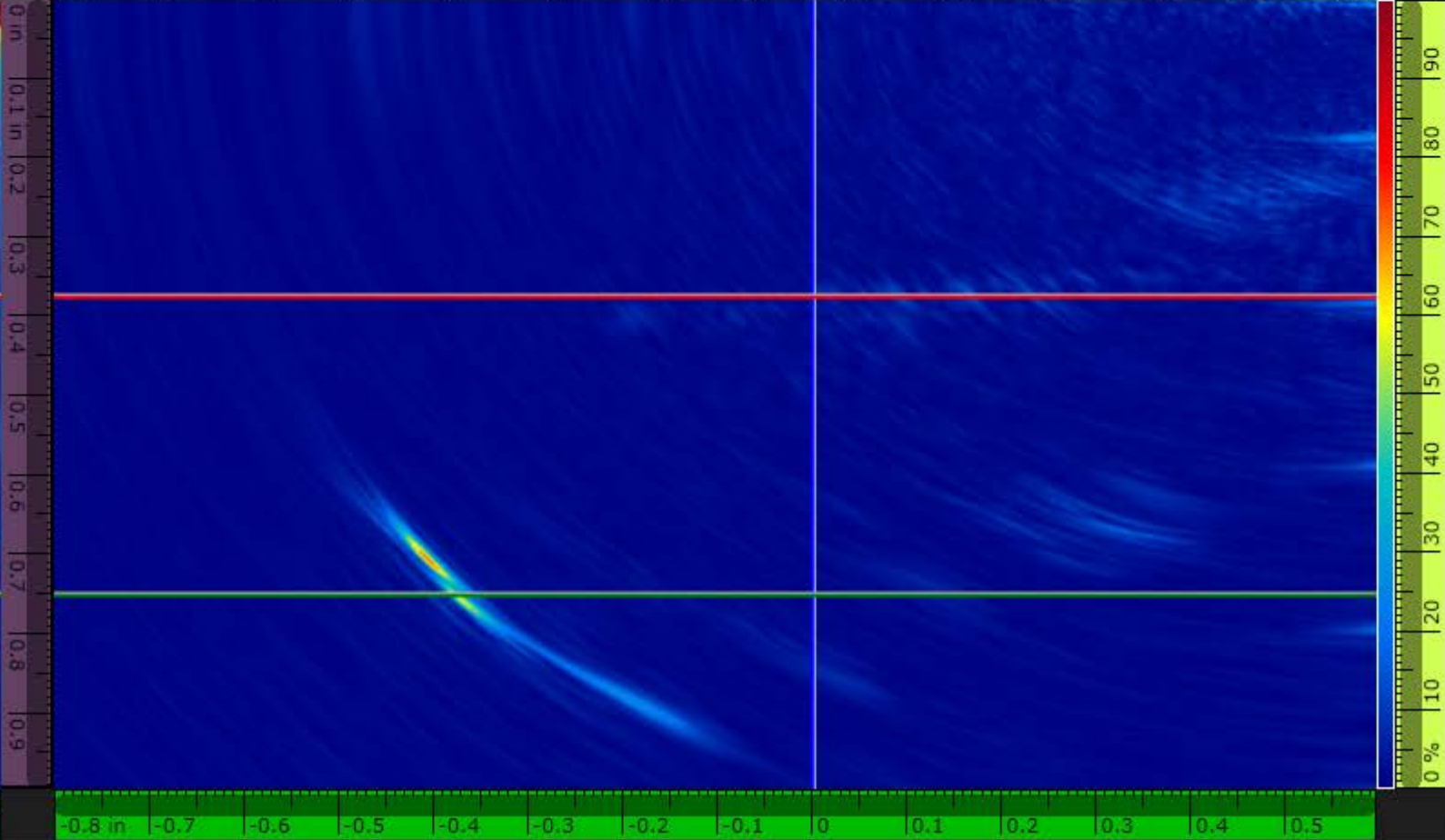
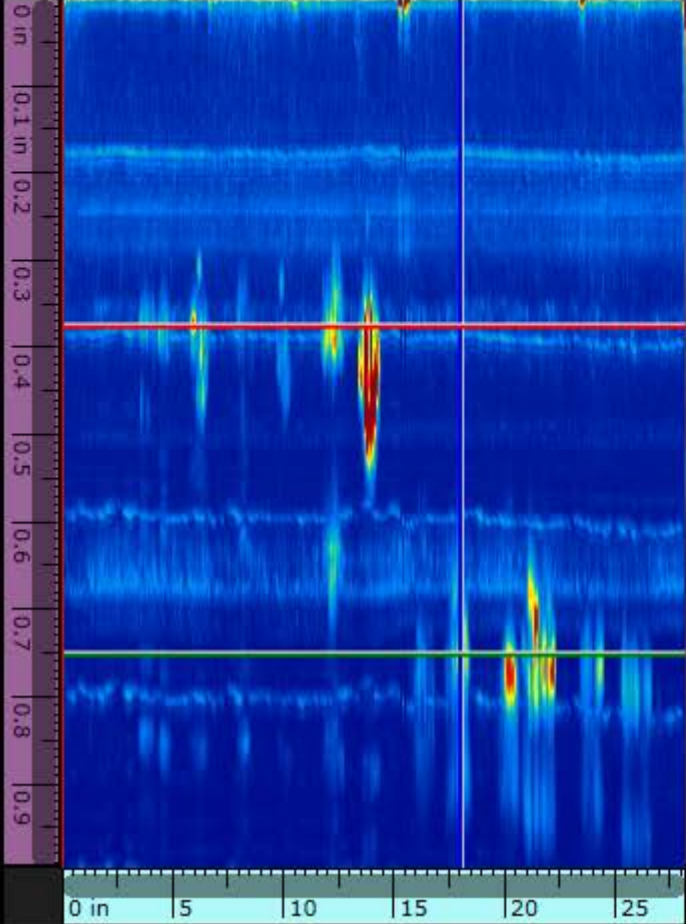
MXU 5.7.0



View



Scan 18.018 in



S(m-r) 0.000 in

D(m-r) 0.375 in

I(m-r) 1.635 in

I-D(m-r) 1.677 in

Ampl.Fid. 2.2 dB

< Previous



Gain
32.0 dB

Index Section
0.000 in

Table 0
ADD Indication

HD

16x375-3_at8.2in_270.odat

46°C 33% A B

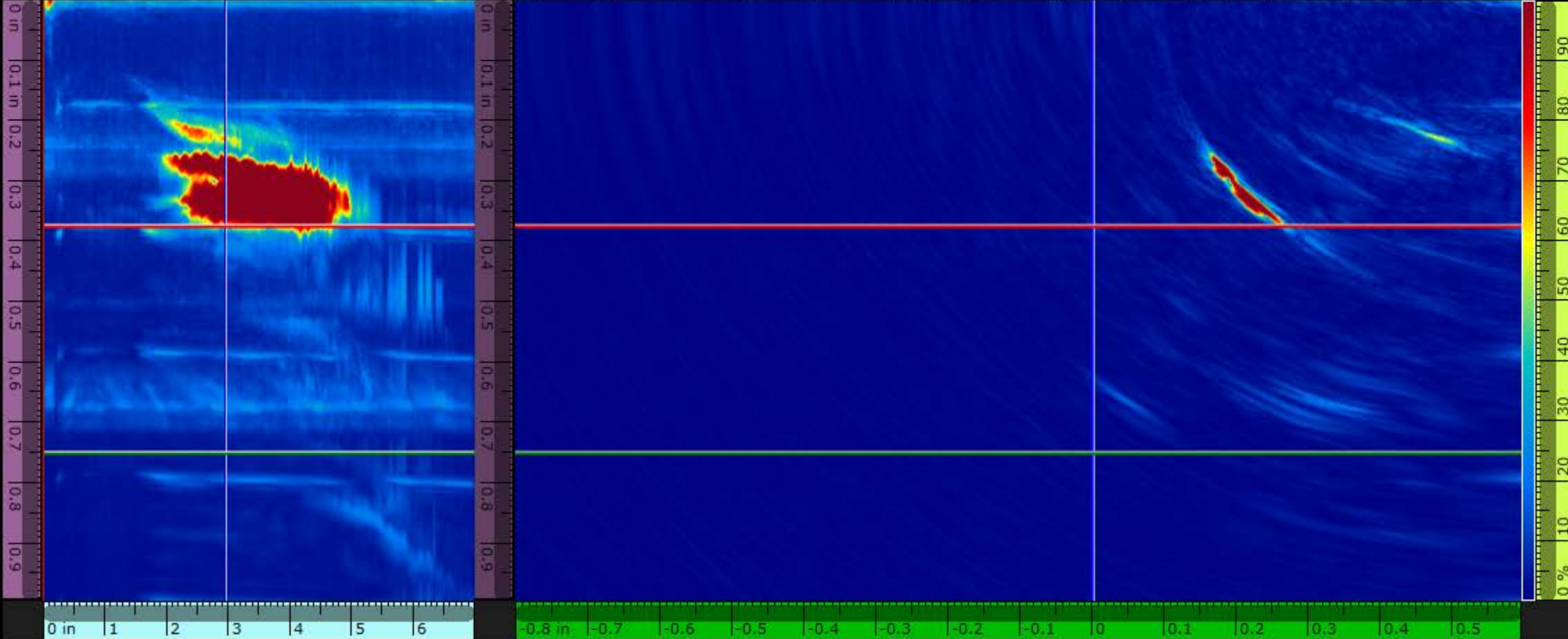
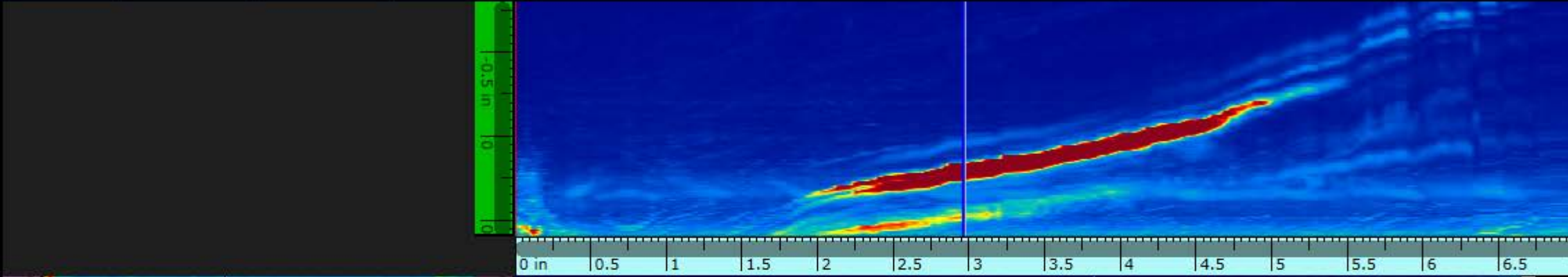
MXU 5.7.0



View

2t

Top-Side-End



< Previous



Gain

32.0 dB

Index Section

0.000 in

Table

0

HD

47°C

28 %



MXU 5.7.0



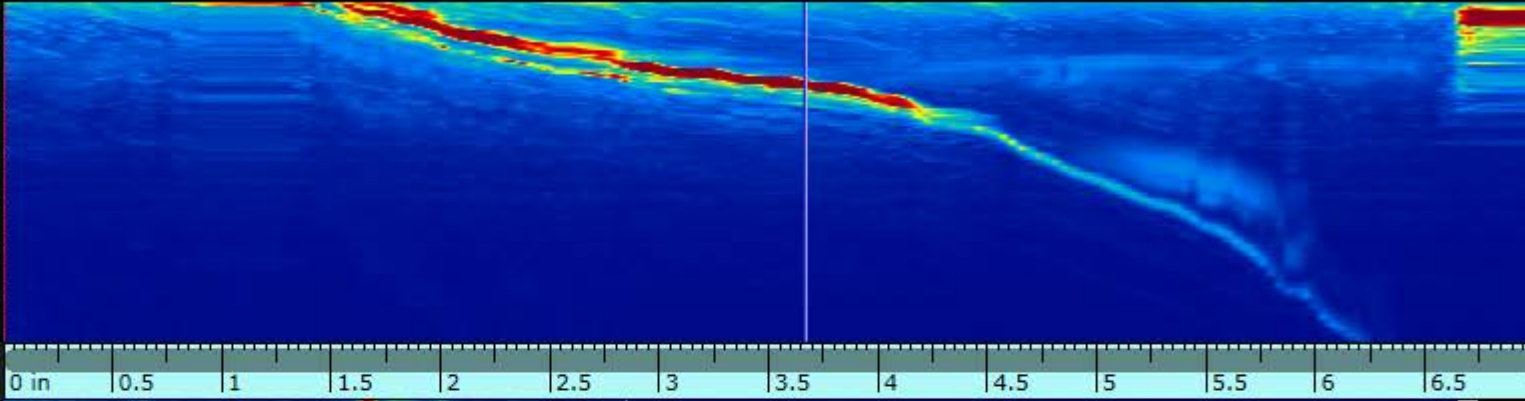
View

ADD Indication

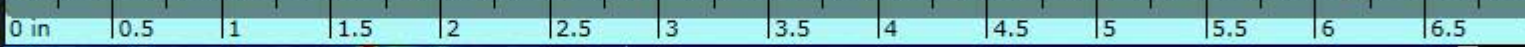
16x375-3_at18.0in_090.odat

2t

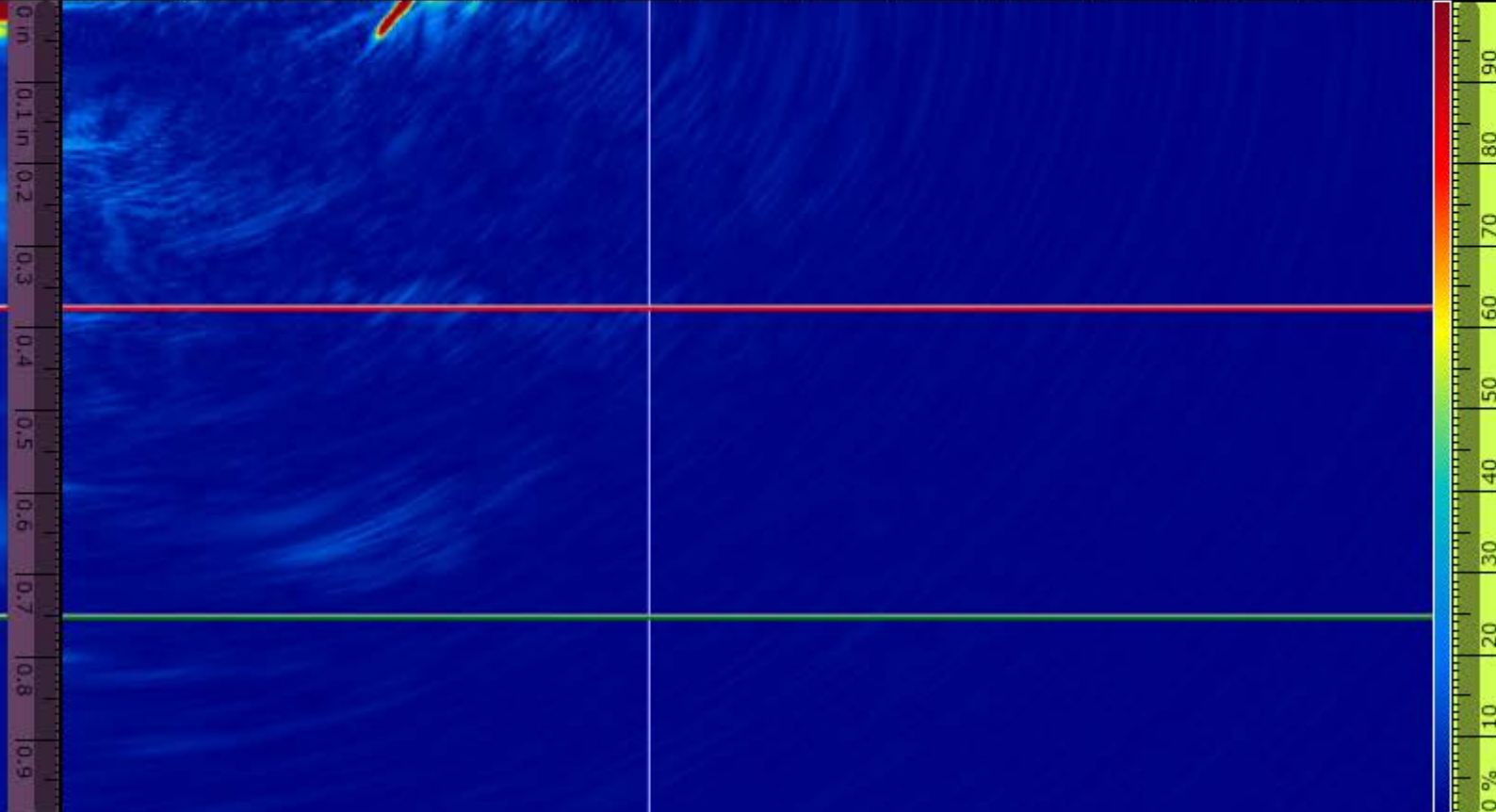
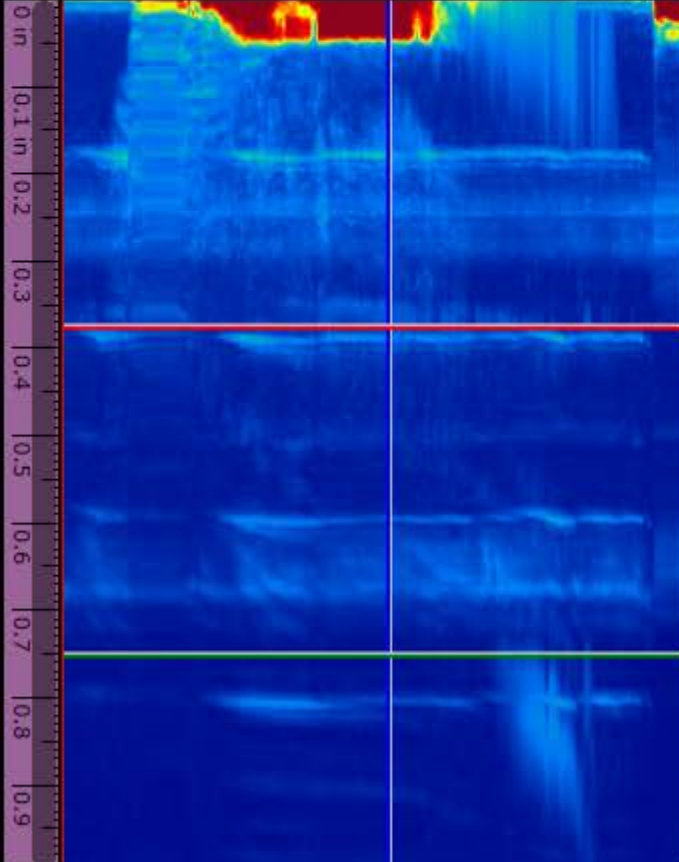
Top-Side-End



Scan
3.663 in



S(m-r)
0.000 in

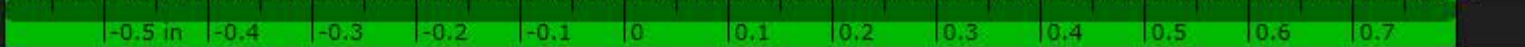
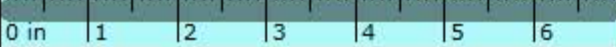


D(m-r)
0.375 in

I(m-r)
1.635 in

I-D(m-r)
1.677 in

Ampl.Fid.
2.2 dB



< Previous



Gain
32.0 dB

Index Section
0.000 in

Table 0
ADD Indication

HD

48°C 28% A B

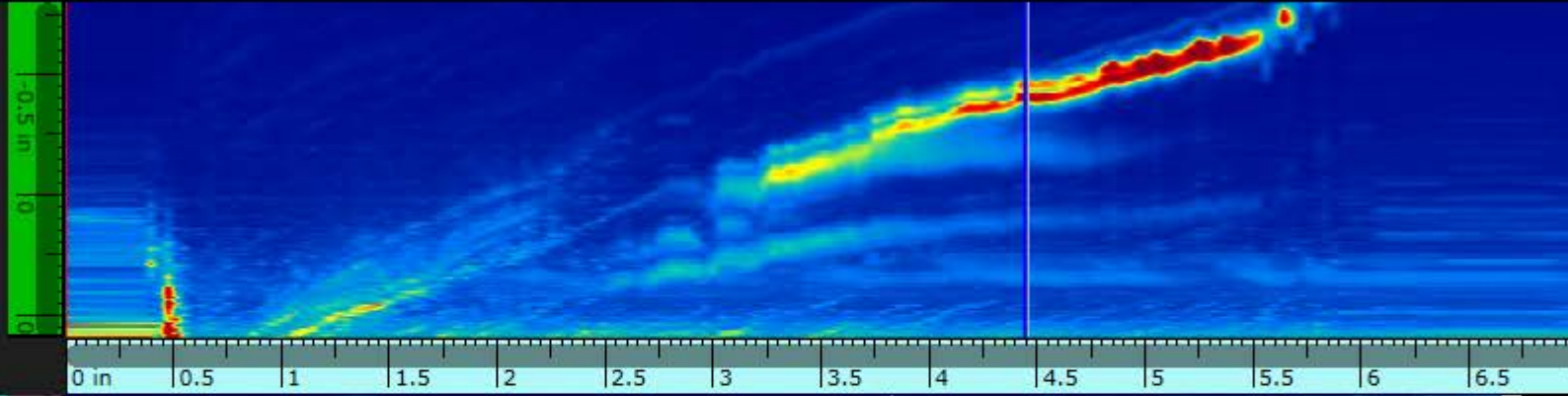
MXU 5.7.0

View

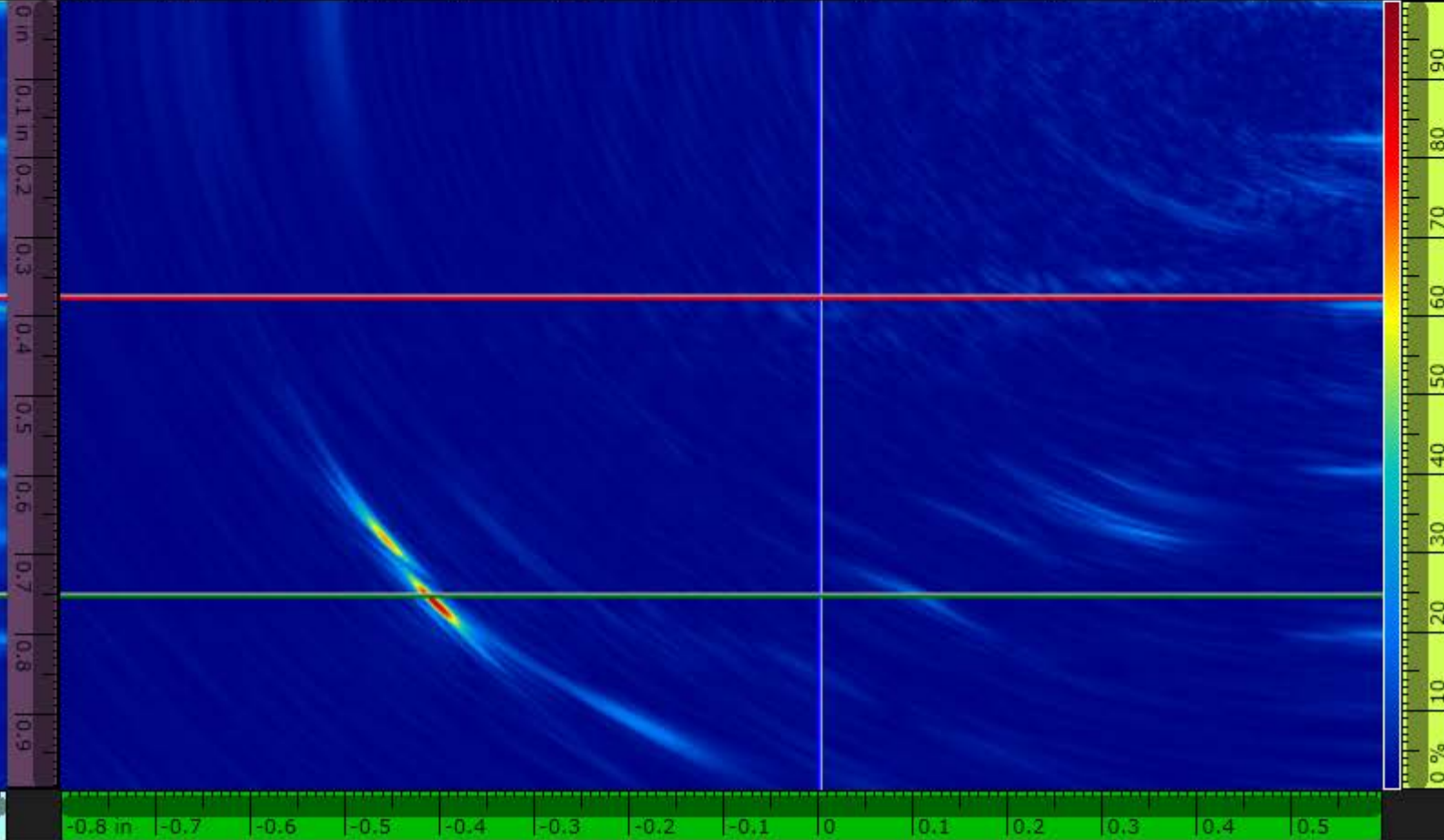
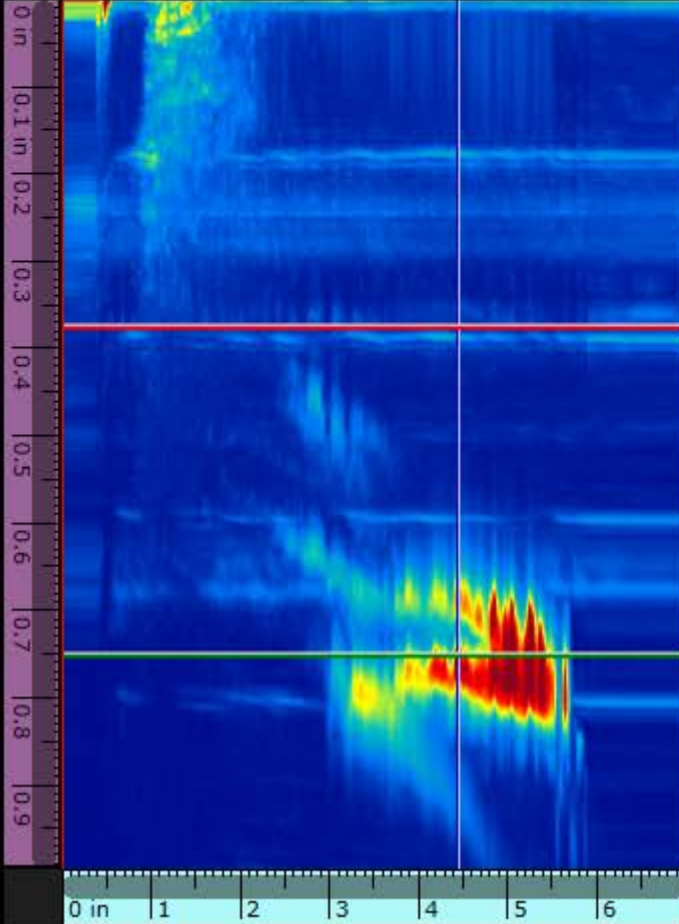
16x375-3_at18.0in_270.odat

2t

Top-Side-End



Scan
4.443 in



S(m-r)
0.000 in

D(m-r)
0.375 in

I(m-r)
1.635 in

I-D(m-r)
1.677 in

Ampl.Fid.
2.2 dB



< Previous