

UT cal blocks and pipe coupons available from Jimmy Ellis  
 March 20, 2021 price list

• FAST1 cal block	\$1200	item # 1
• FAST1 cal block -- long version	\$1300	item #1L
• 0.300" thick notch block	\$1000	item # 2
• FAST1 cal block – METRIC	\$1200	item # 3
• 8mm thick notch block – METRIC	\$1000	item # 4
• 8"X188 pipe coupon of angled flaws	\$500	item # 5
• 16"X375 pipe coupon of angled flaws	\$500	item # 6
• Midwall sizing block	\$1100	item # 7
• 15-degree angled notch block	\$1000	item # 8
• 25-degree angled notch block	\$1000	item # 9
• 35-degree angled notch block	\$1000	item # 10
• 45-degree angled notch block	\$1000	item # 11
• FAST2 cal block	\$1400	item # 12
• FAST2/TCG cal block	\$1100	item # 13
• FAST3 cal block	\$1400	item # 14
• FAST3/TCG cal block	\$1300	item # 15

Price breaks may be available at larger quantities than singles.  
 A material certification is provided for each item made from new material.  
 Pipe coupons of angled flaws provided with sizing data.  
 Pricing is for steel.  
 Nickel plating is an additional option.  
 Serialization is by agreement.  
 Shipping is extra.

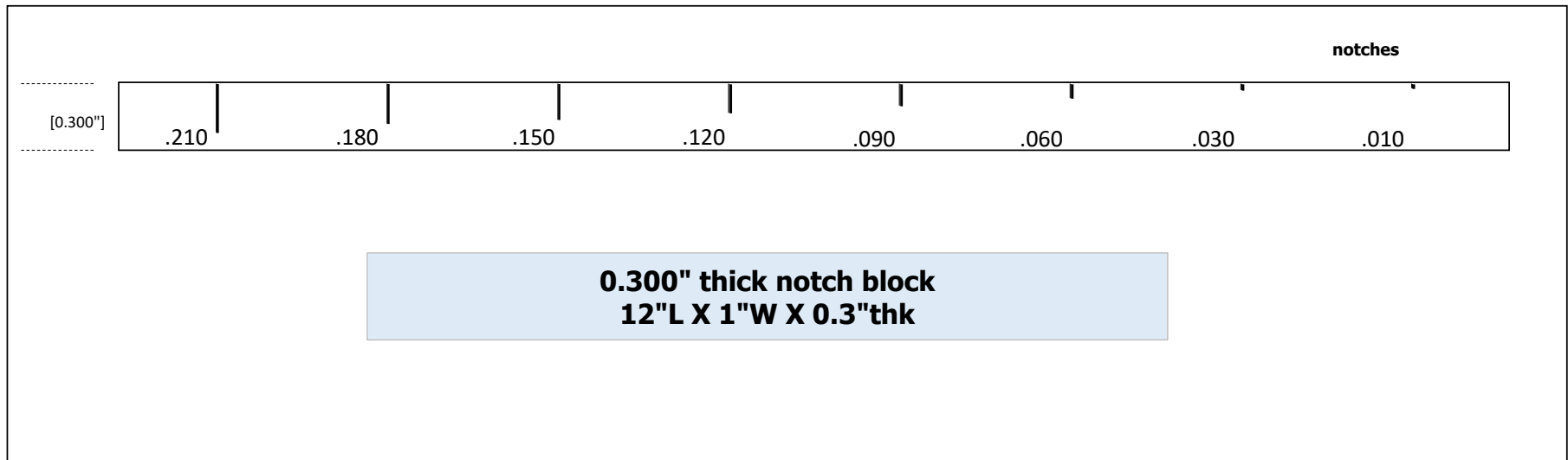
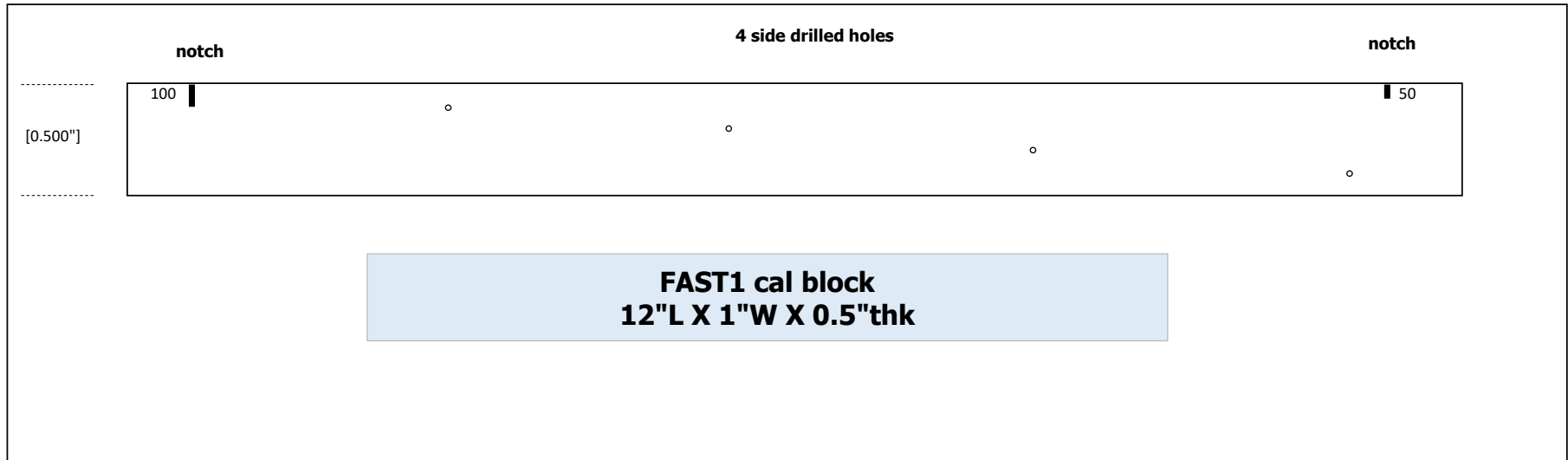
- LS1 long seam cal block \$1400 item # 16
- LS2 long seam cal block \$1450 item # 17
- LS3 long seam cal block \$1450 item # 18
- LS4 long seam cal block \$1450 item # 19
- LS5 long seam cal block \$1450 item # 20
- LS6 long seam cal block \$1500 item # 21
- LS7 long seam cal block \$1500 item # 22
- LS8 long seam cal block \$1500 item # 23
- LS9 long seam cal block \$1500 item # 24

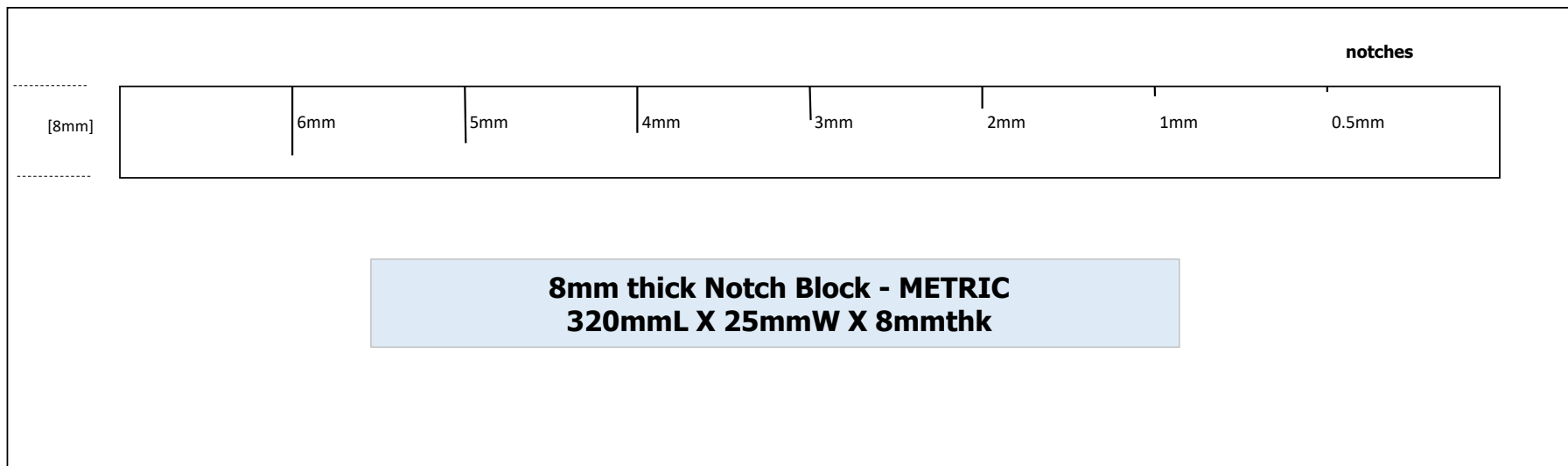
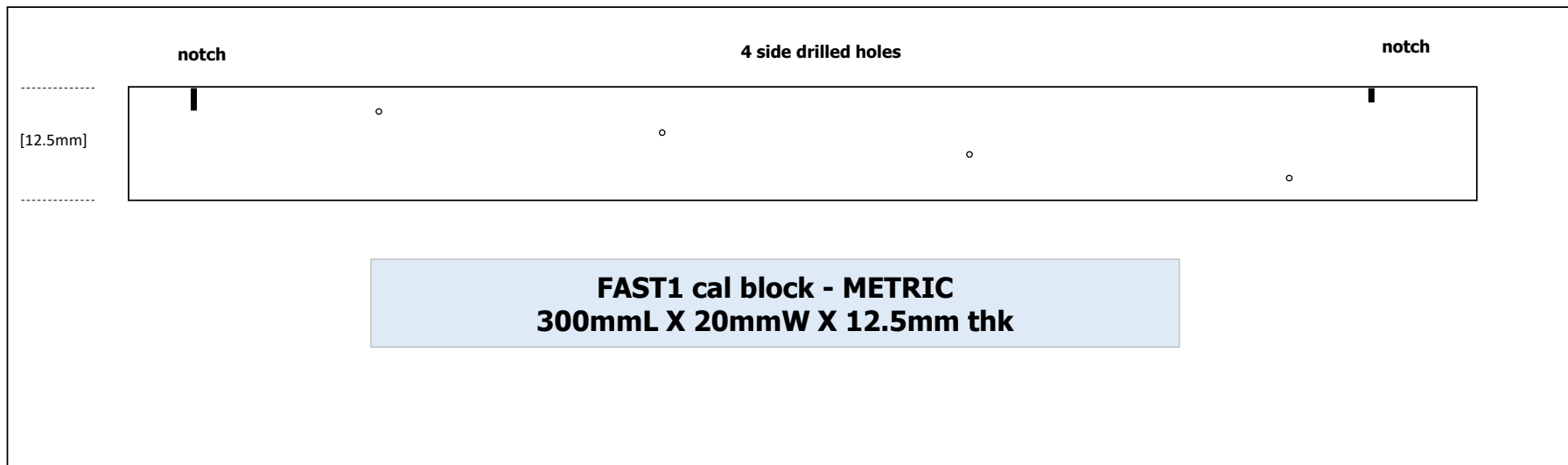
Cal blocks and coupons description table

Item #	Name	Overall Dimensions	Reflectors	Uses	Sketch/Photo /snip Page
1	FAST1 cal block	12"x1"x0.5"	4 side drilled holes at every 0.100" of depth and 2 EDM notches	Thin-walled calibration and flaw sizing	5, 12
1L	FAST1 cal block LONG VERSION	17" x 1" x 0.5"	Same as above, with an additional inch of clearance between each reflector	"	
2	Notch block 0.300" thick	12"x1"x0.3"	8 EDM notches	Thin-walled flaw sizing	5, 12
3	FAST1 cal block METRIC	300mm x 20mm x 12.5mm	4 side drilled holes at every 2.5mm of depth and 2 EDM notches	Thin-walled calibration and flaw sizing	6
4	Notch block 8mm thick METRIC	320mm x 25mm x 8mm	8 EDM notches	Thin-walled flaw sizing	6
5	8"x188 pipe coupon of angled flaws	30"x6"x0.188"	6 ID connected and 6 OD connected alternately slanted wafer wheel notches at graduated flaw heights	Distance encoded axial detection scans and timed radial sizing scans Parallel and non-parallel ToFD scans Etc.	7-9
6	16"x375 pipe coupon of angled flaws	28"x6"x0.375"	"	"	7-9
7	Midwall sizing block	13.5"x0.450"x0.300"	8 narrow EDM slots, not ID or OD connected	Ideal for ToFD, TFM, PWI sizing and other techniques that can size the bottom of a midwall flaw	10, 11
8	15-degree angled notch block	12"x1"x0.3"	8 EDMs at 15 degrees	Observe effects of flaw orientation angle	11
9	25-degree angled notch block	12"x1"x0.3"	8 EDMs at 25 degrees	"	11
10	35-degree angled notch block	12"x1"x0.3"	8 EDMs at 35 degrees	"	11
11	45-degree angled notch block	12"x1"x0.3"	8 EDMs at 45 degrees	"	11
12	FAST2 cal block	12.5"x1.25"x1.5"	Seven 1/32" diam. SDHs	Calibration and sizing for moderately thick material	12

<b>Item #</b>	<b>Name</b>	<b>Overall Dimensions</b>	<b>Reflectors</b>	<b>Uses</b>	<b>Sketch/Photo /snip Page</b>
13	FAST2/TCG block	12.5"x1.25"x1.5"	Four 1/32" diam. SDHs	Same as above, but with less holes to prevent interference during TCG construction	12
14	FAST3 cal block	30"x1"x3"	Fifteen 1/32" diam. SDHs	Calibration for very thick material	13
15	FAST3/TCG block	30"x1"x3"	Six 1/32" diam. SDHs at every 1/4" of depth	Same as above, but with less holes to prevent interference during TCG construction	13
16	LS1 Long Seam Cal Block 4.5" OD pipe	6" arc length x 8" long	One midwall 1/32" diam. Axial hole, Two ID and two OD axial notches 0.010" and 0.030" deep	For use with C.O.D. curved wedges for 4.5" OD pipe	14-15
17	LS2 Long Seam Cal Block 5.563" OD pipe	6" arc length x 8" long	"	For use with C.O.D. curved wedges for 5.563" OD pipe	14-15
18	LS3 Long Seam Cal Block 6.625" OD pipe	6" arc length x 8" long	"	For use with C.O.D. curved wedges for 6.625" OD pipe	14-15
19	LS4 Long Seam Cal Block 8.625" OD pipe	6" arc length x 8" long	"	For use with C.O.D. curved wedges for 8.625" OD pipe	14-15
20	LS5 Long Seam Cal Block 10.75" OD pipe	6" arc length x 8" long	"	For use with C.O.D. curved wedges for 10.75" OD pipe	14-15
21	LS6 Long Seam Cal Block 12.75" OD pipe	6" arc length x 8" long	"	For use with C.O.D. curved wedges for 12.75" OD pipe	14-15
22	LS7 Long Seam Cal Block 14" OD pipe	6" arc length x 8" long	"	For use with C.O.D. curved wedges for 14" OD pipe	14-15
23	LS8 Long Seam Cal Block 16" OD pipe	6" arc length x 8" long	"	For use with C.O.D. curved wedges for 16" OD pipe	14-15
24	LS9 Long Seam Cal Block 18" OD pipe	6" arc length x 8" long	"	For use with C.O.D. curved wedges for 18" OD pipe	14-15

NOTE: for OD 20 and greater, use flat cal blocks

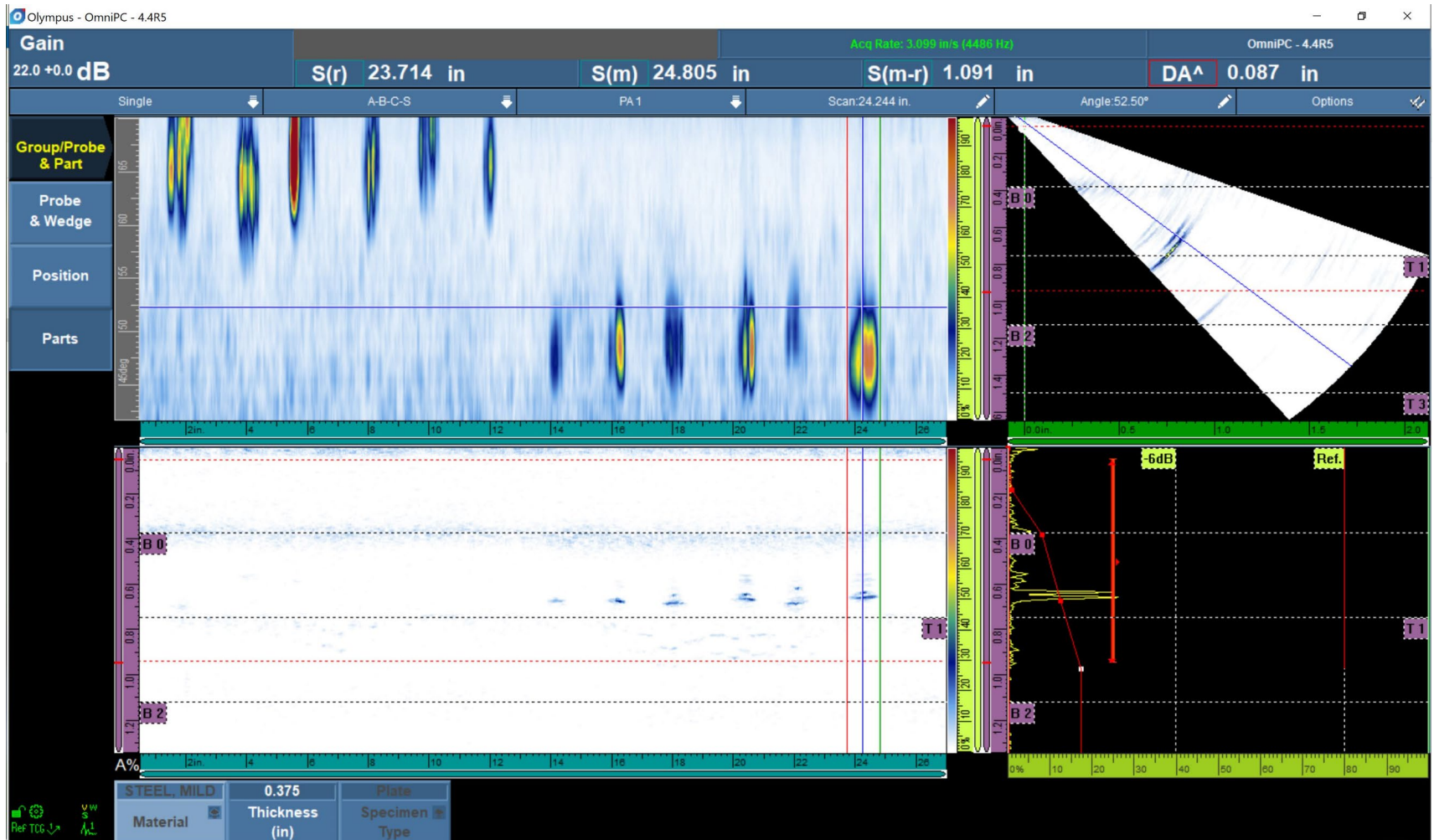






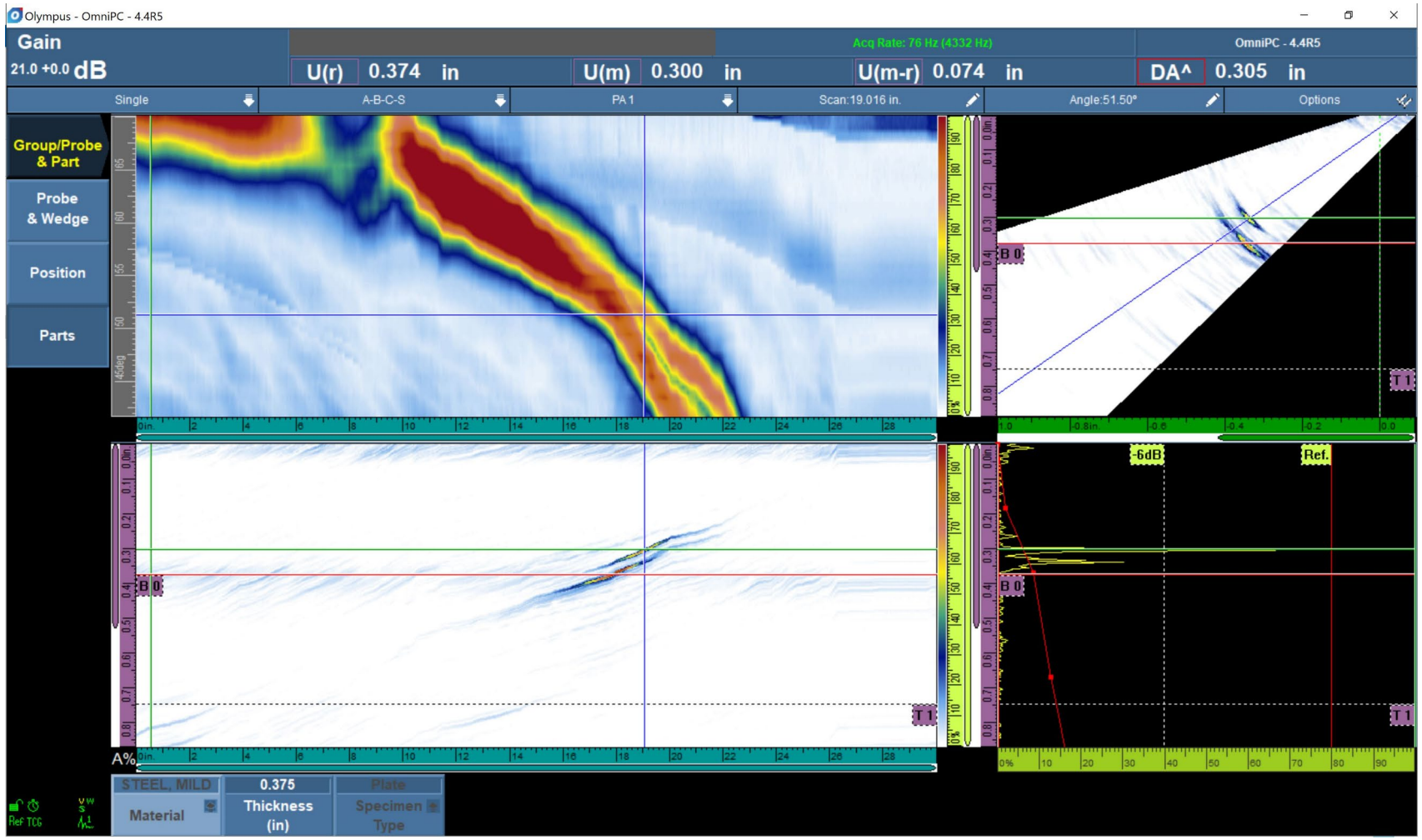
**Pipe Coupons of angled notches  
typical sizes:  
30"L x 6"W x 0.188"thk from 8x188 pipe  
28"L x 6"W x 0.375"thk from 16x375 pipe**



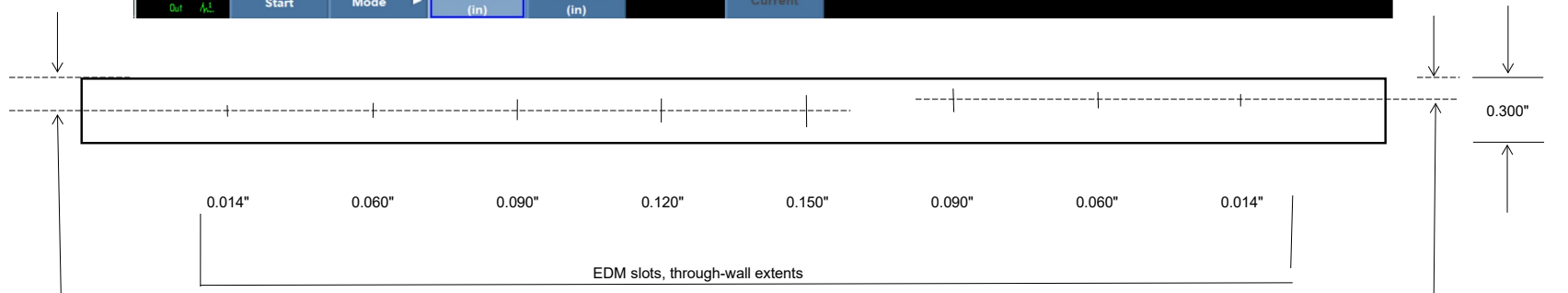
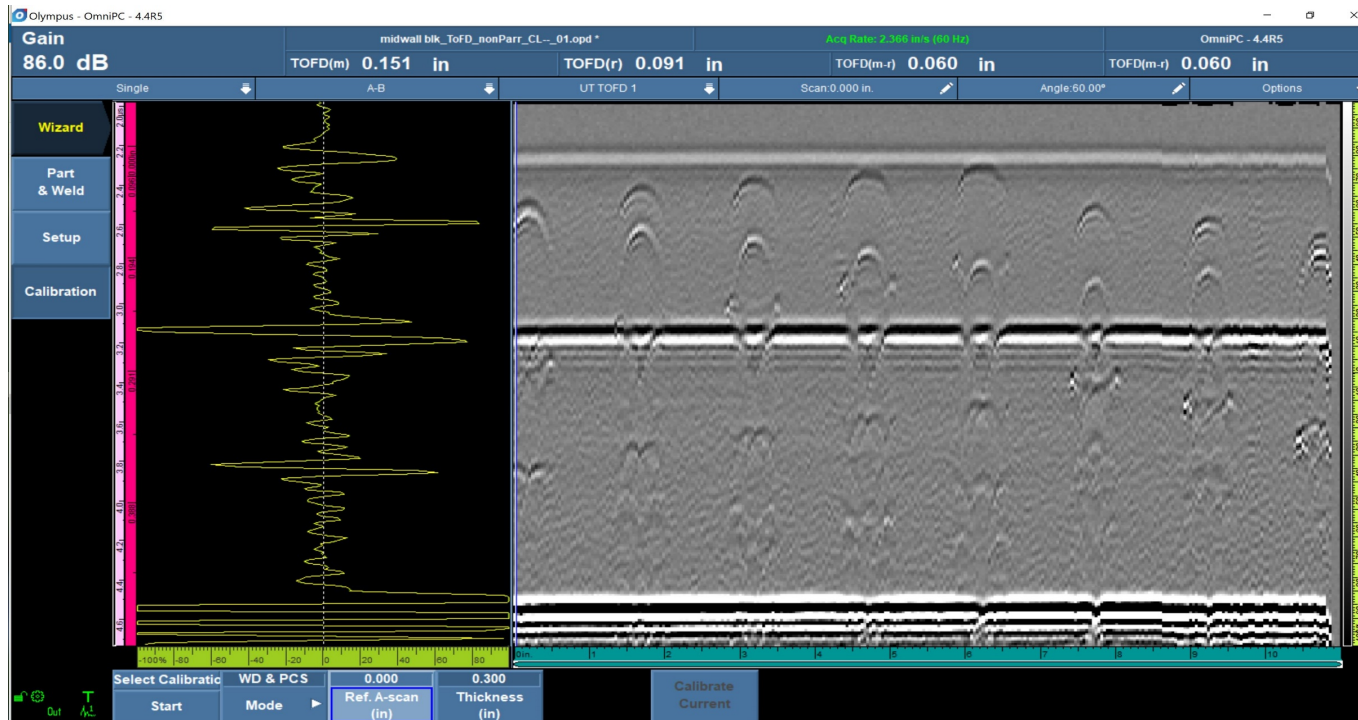


example of distance encoded detection scan from a 30x375 pipe coupon





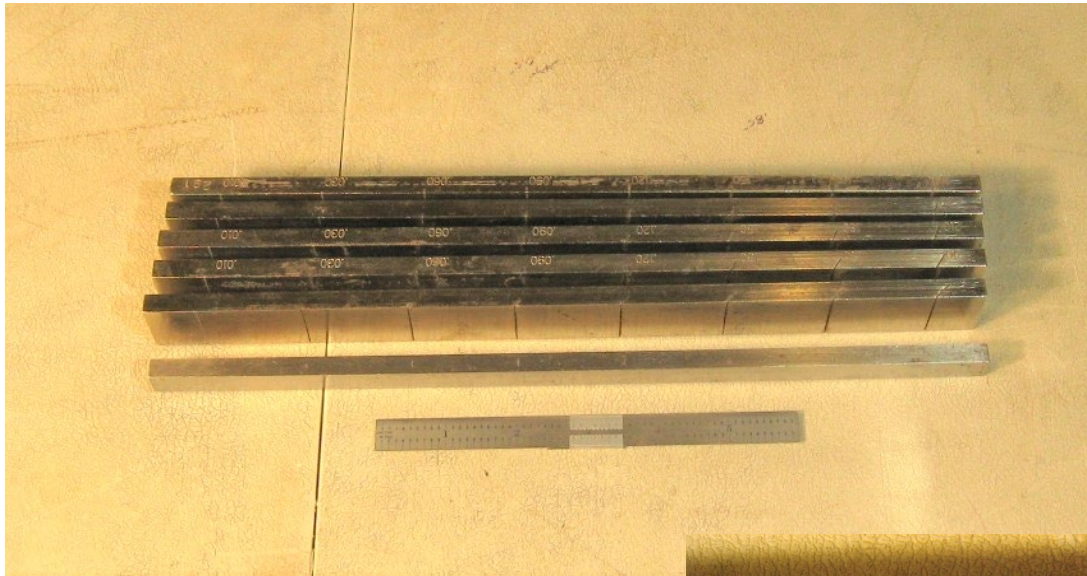
example of timed radial sizing scan from a 30x375 pipe coupon



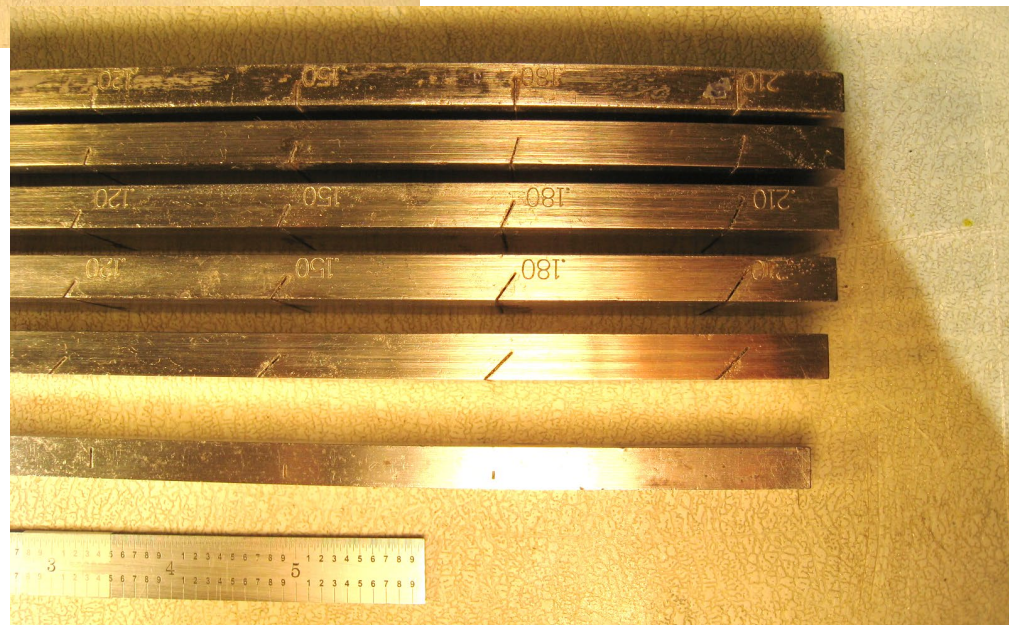
**Midwall sizing block**  
**13.5"L X 0.45"W X 0.3"thk, with an example of a high freq ToFD shown above**

depth to slot centerline 0.150"

depth to slot centerline 0.100"

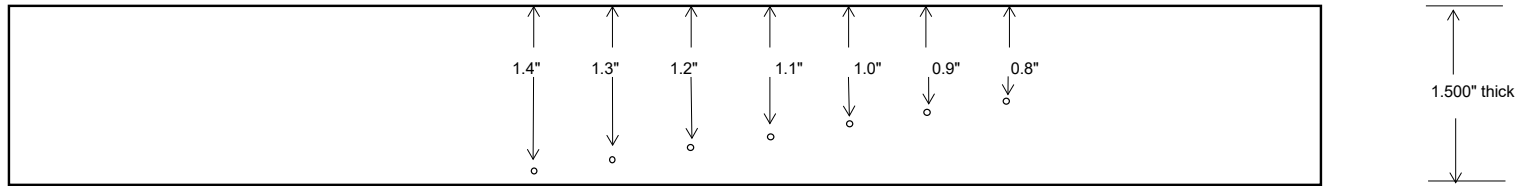


closer view

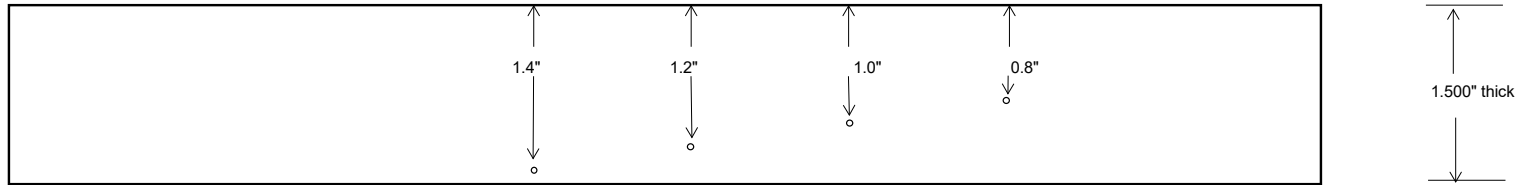


**top to bottom:**

- Notch block, notches angled 0 degrees**
- Notch block, notches angled 15 degrees**
- Notch block, notches angled 25 degrees**
- Notch block, notches angled 35 degrees**
- Notch block, notches angled 45 degrees**
- Midwall flaw sizing block**

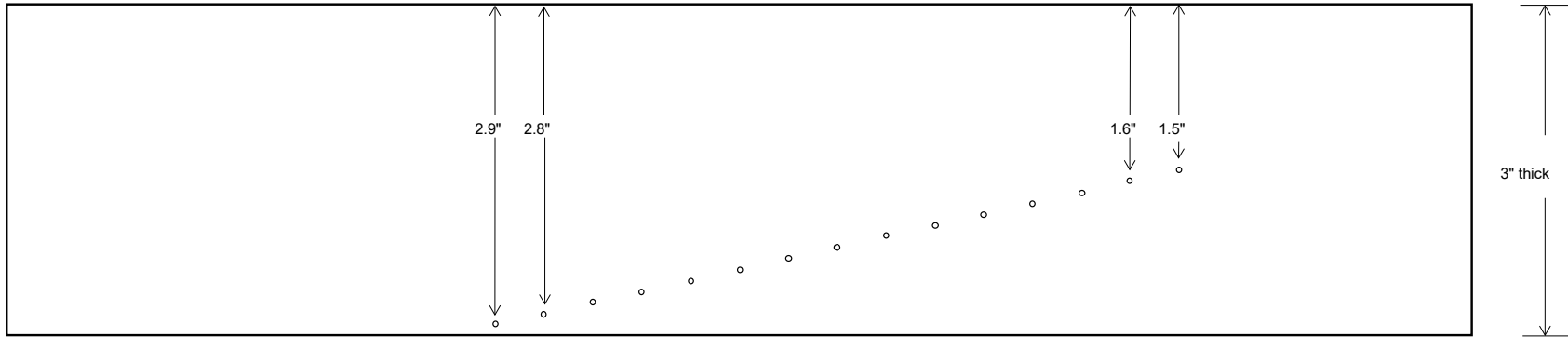


**FAST2 cal block  
12.5"L X 1.25"W X 1.5"thk**

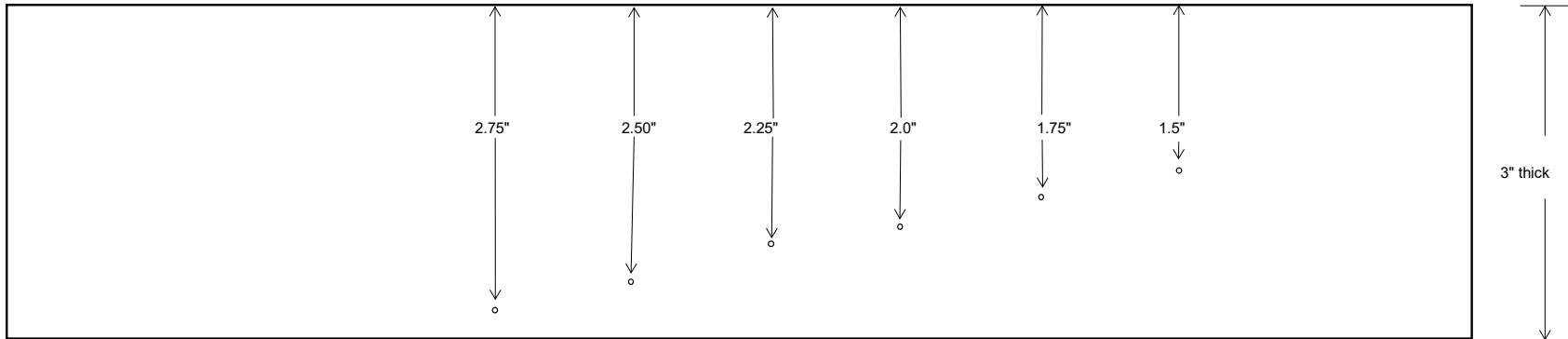


**FAST2/TCG cal block  
12.5"L X 1.25"W X 1.5"thk**

side views



**FAST3 cal block  
30"L X 1"W X 3"thk**



**FAST3/TCG cal block  
30"L X 1"W X 3"thk**

side views

## Long seam cal blocks

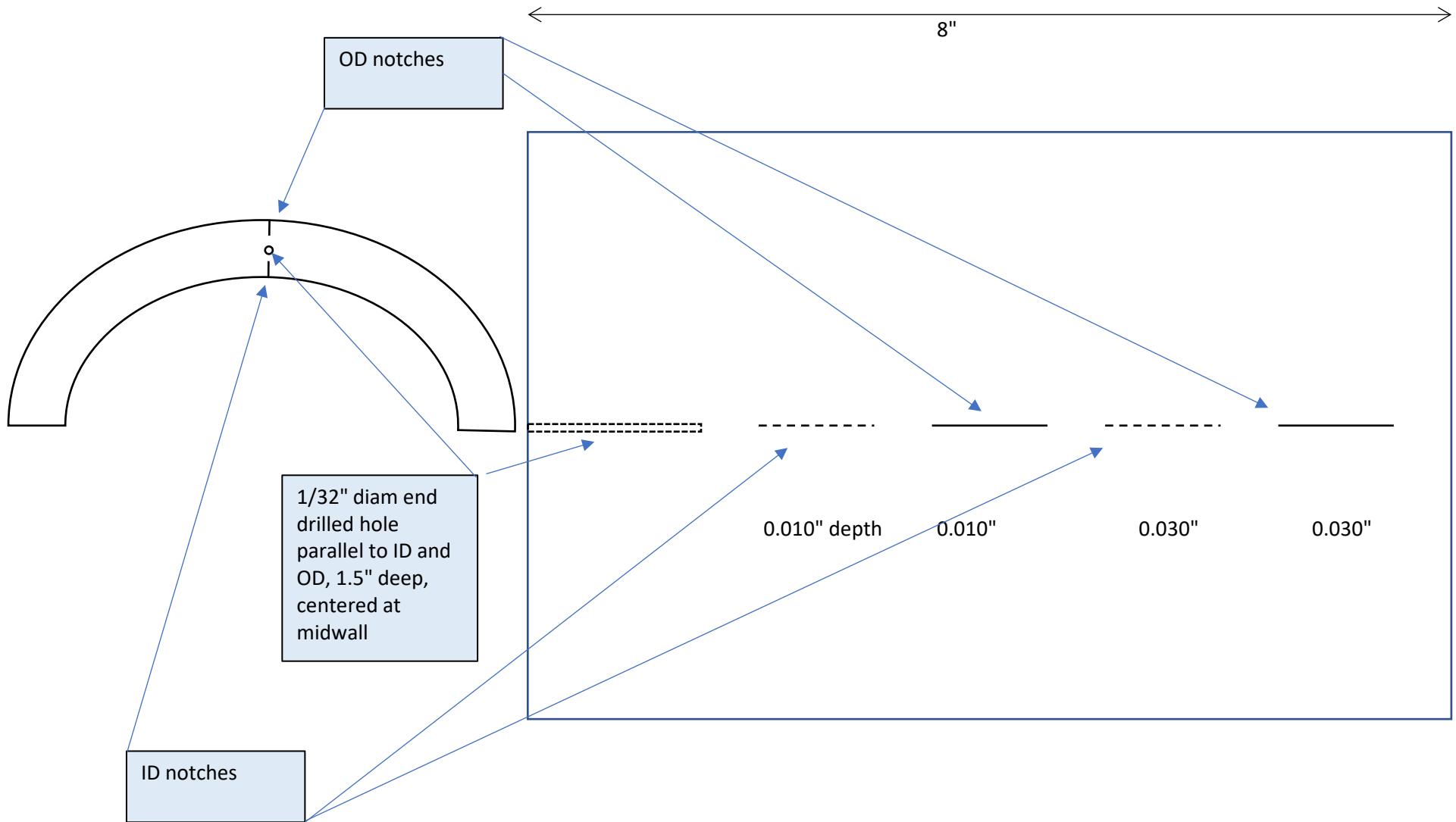
<b>Item #</b>	<b>nominal pipe size</b>	<b>OD</b>	<b>nominal thickness</b>
LS1	4	4.5	0.237
LS2	5	5.563	0.258
LS3	6	6.625	0.280
LS4	8	8.625	0.322
LS5	10	10.75	0.365
LS6	12	12.75	0.375
LS7	14	14.00	0.375
LS8	16	16.00	0.375
LS9	18	18.00	0.375

see sketch, next page



Pipe Section End View

Pipe Section Developed View



8" long  
with a width of 6" arc length